

Annual Flood Peaks for Des Plaines River at Lincolnshire



USGS
Lincolnshire
Monitoring Station
#05528100

Half Day Road IL Rte 22

Milwaukee Avenue U.S. Rte 45

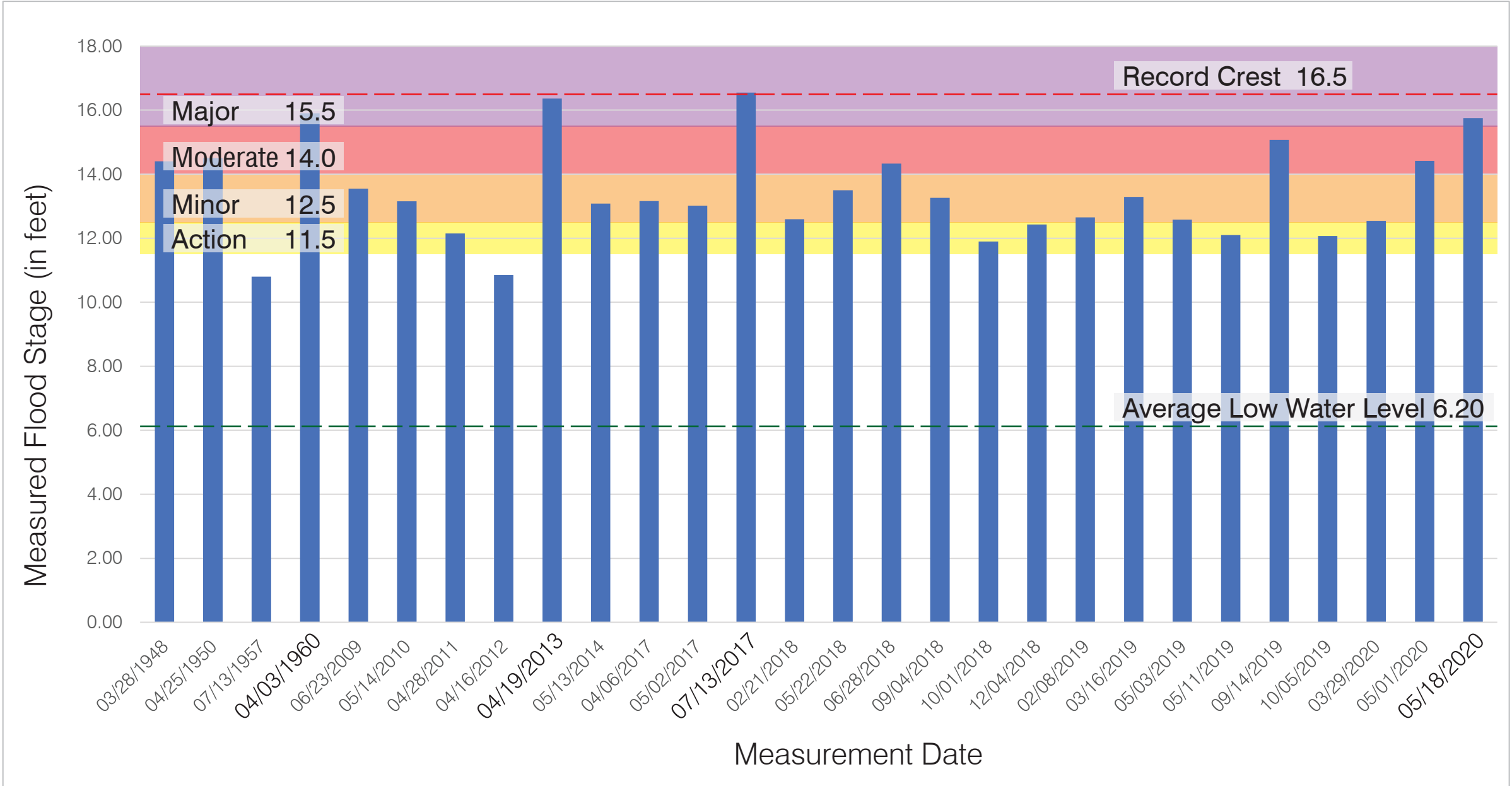
Village of
Riverwoods

Riverwoods
Reserve

Deerfield Road

Historical Record of Des Plaines River Crest

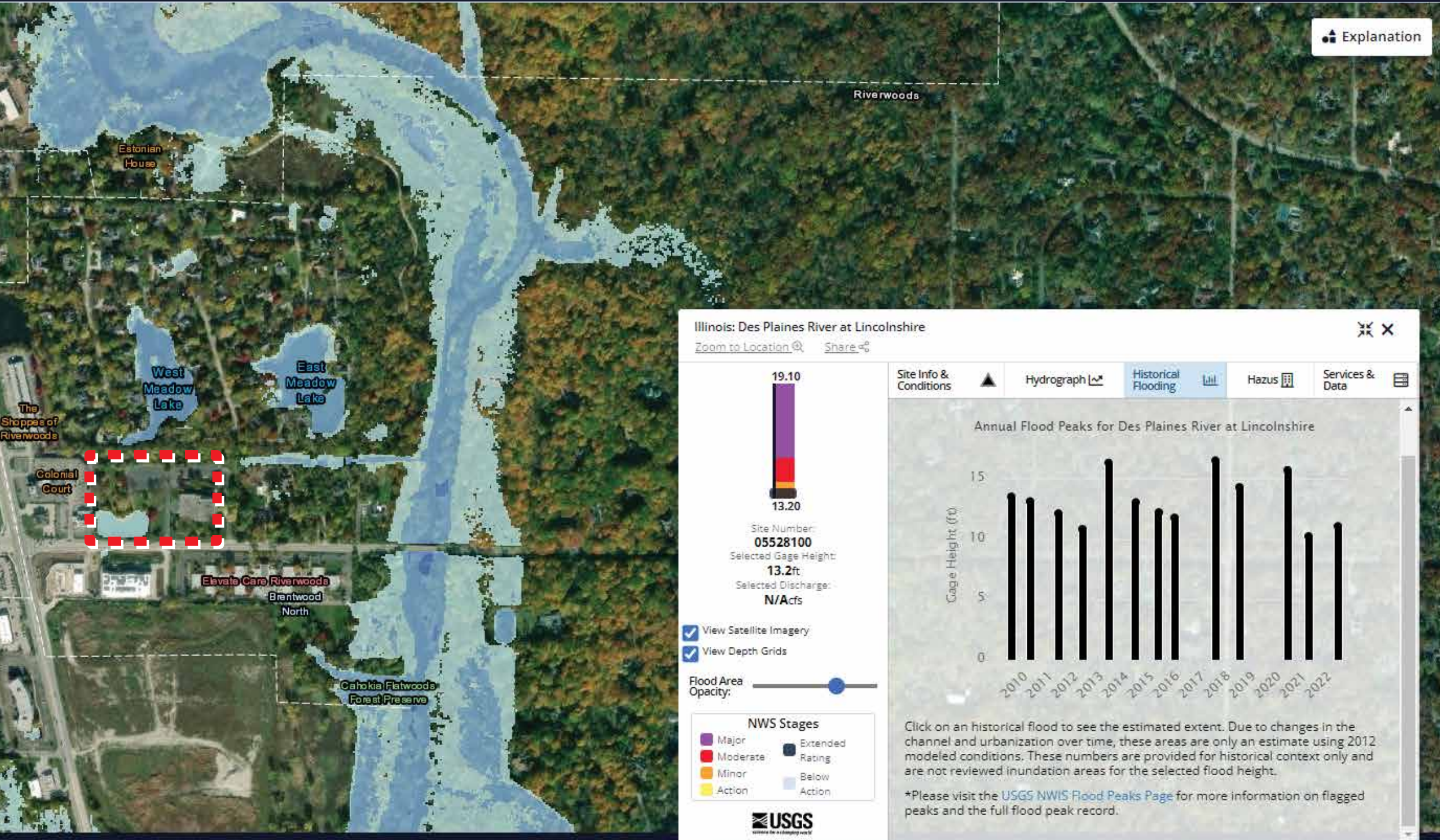
As Measured at USGS Lincolnshire Water Gauge Site No. 05528100



Note:

Data shown is a compilation of publicly available information from the USGS and NOAA websites, accessed in Spring, 2023. Add 630 to gauge elevations for approximate NAVD88 datum.

Annual Flood Peak Inundation Map 2009



Explanation

Riverwoods

Estonian House

West Meadow Lake

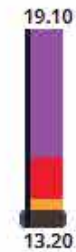
East Meadow Lake

The Shoppes of Riverwoods

Colonial Court

Elevate Care Riverwoods
Brentwood North

Cahokia Flatwoods Forest Preserve



Site Number: 05528100
Selected Gage Height: 13.2ft
Selected Discharge: N/Acfs

- View Satellite Imagery
- View Depth Grids

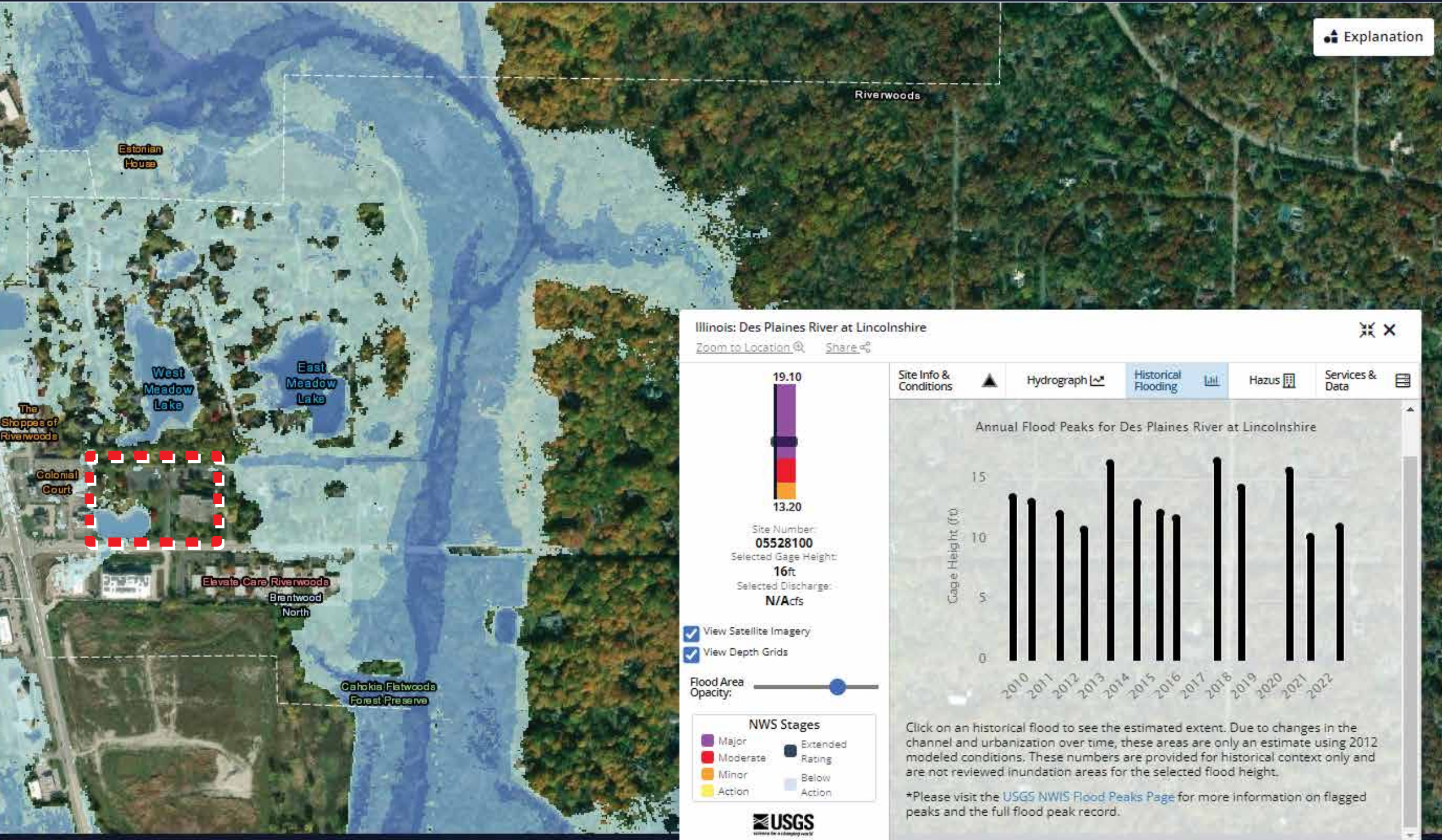
Flood Area Opacity:

NWS Stages

■ Major	■ Extended Rating
■ Moderate	■ Below Action
■ Minor	
■ Action	



Annual Flood Peak Inundation Map 2013



Explanation

Site Info & Conditions

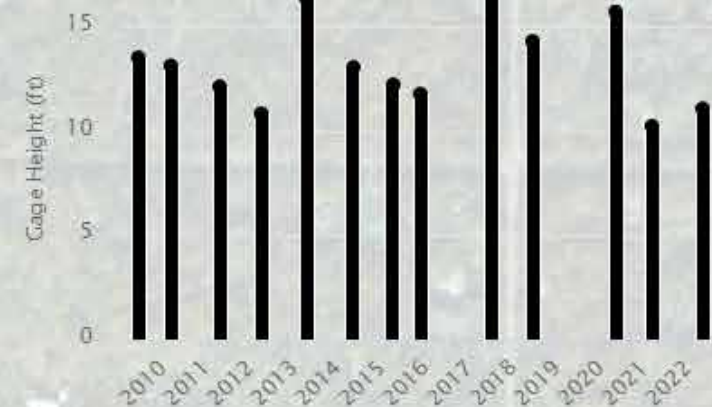
Hydrograph

Historical Flooding

Hazus

Services & Data

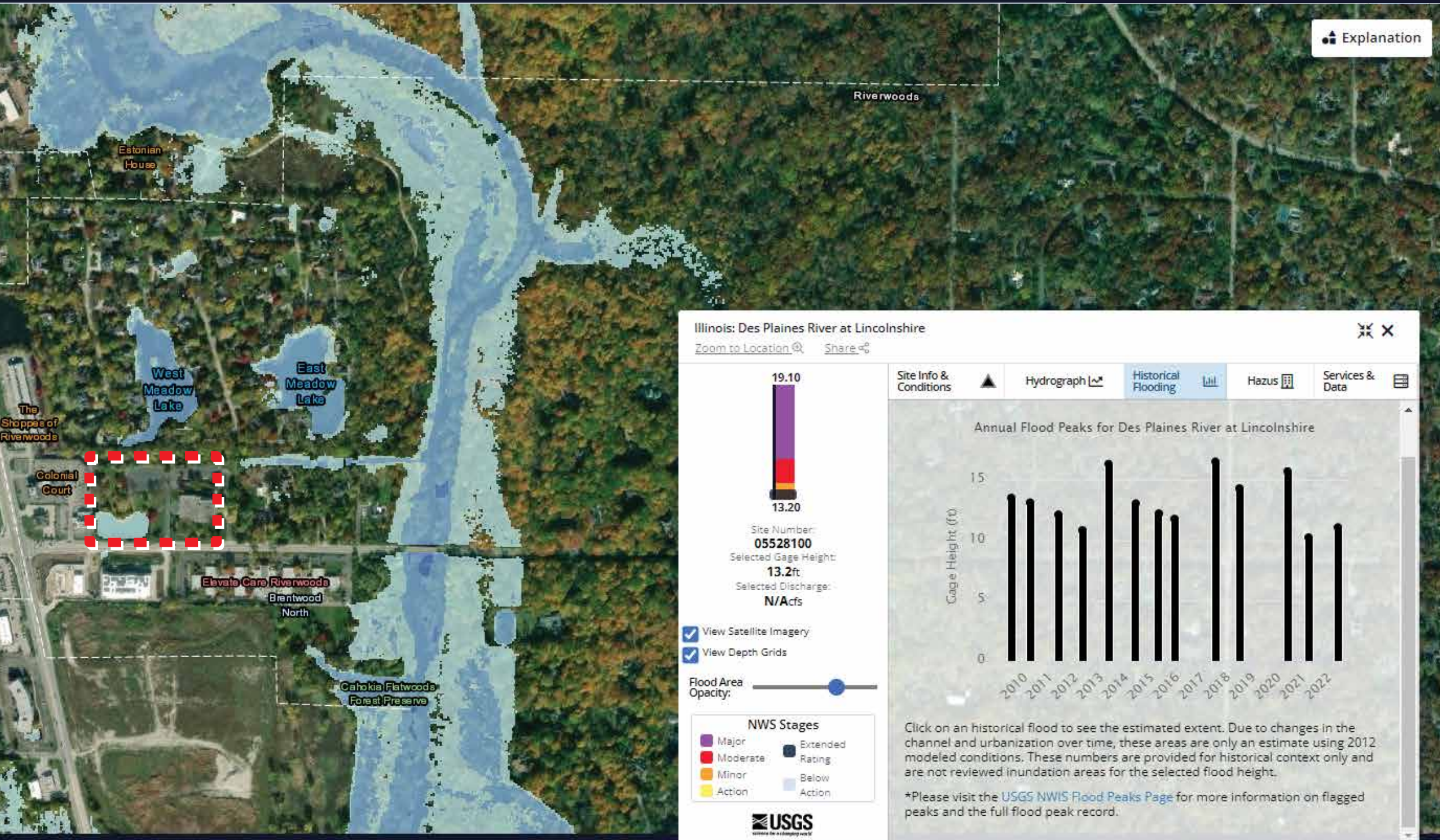
Annual Flood Peaks for Des Plaines River at Lincolnshire



Click on an historical flood to see the estimated extent. Due to changes in the channel and urbanization over time, these areas are only an estimate using 2012 modeled conditions. These numbers are provided for historical context only and are not reviewed inundation areas for the selected flood height.

*Please visit the [USGS NWIS Flood Peaks Page](#) for more information on flagged peaks and the full flood peak record.

Annual Flood Peak Inundation Map 2014



Explanation

Site Info & Conditions

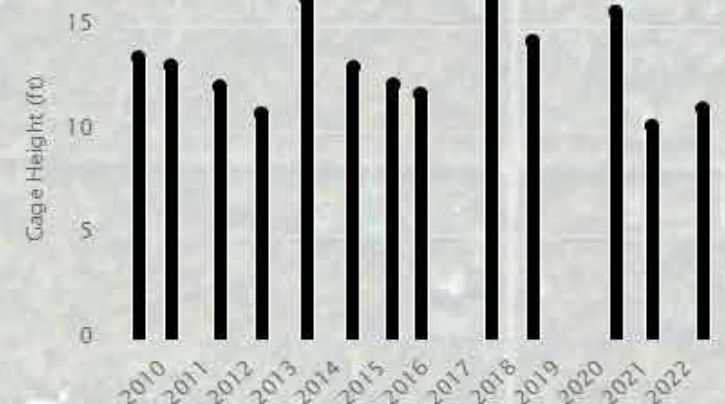
Hydrograph

Historical Flooding

Hazus

Services & Data

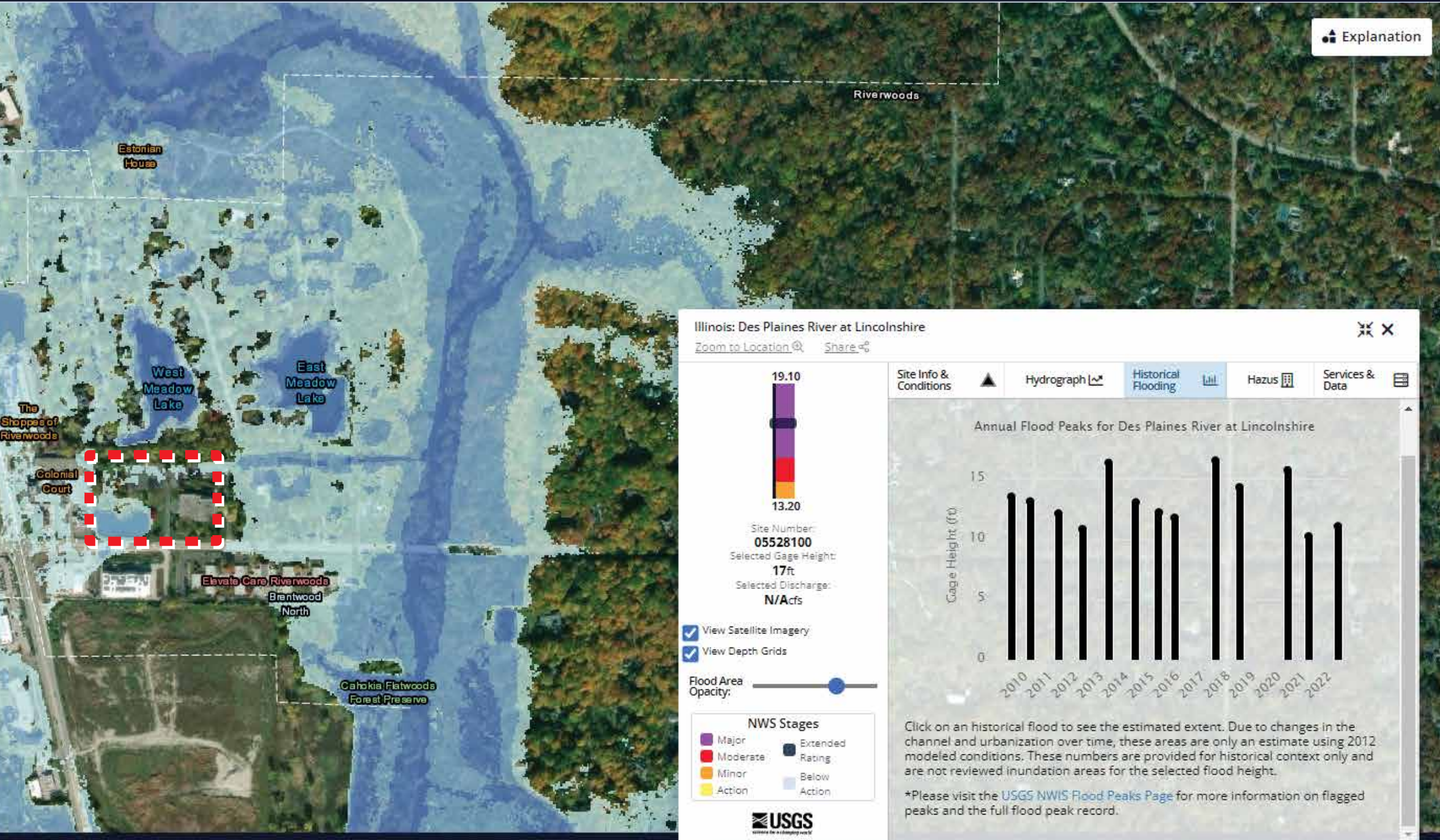
Annual Flood Peaks for Des Plaines River at Lincolnshire



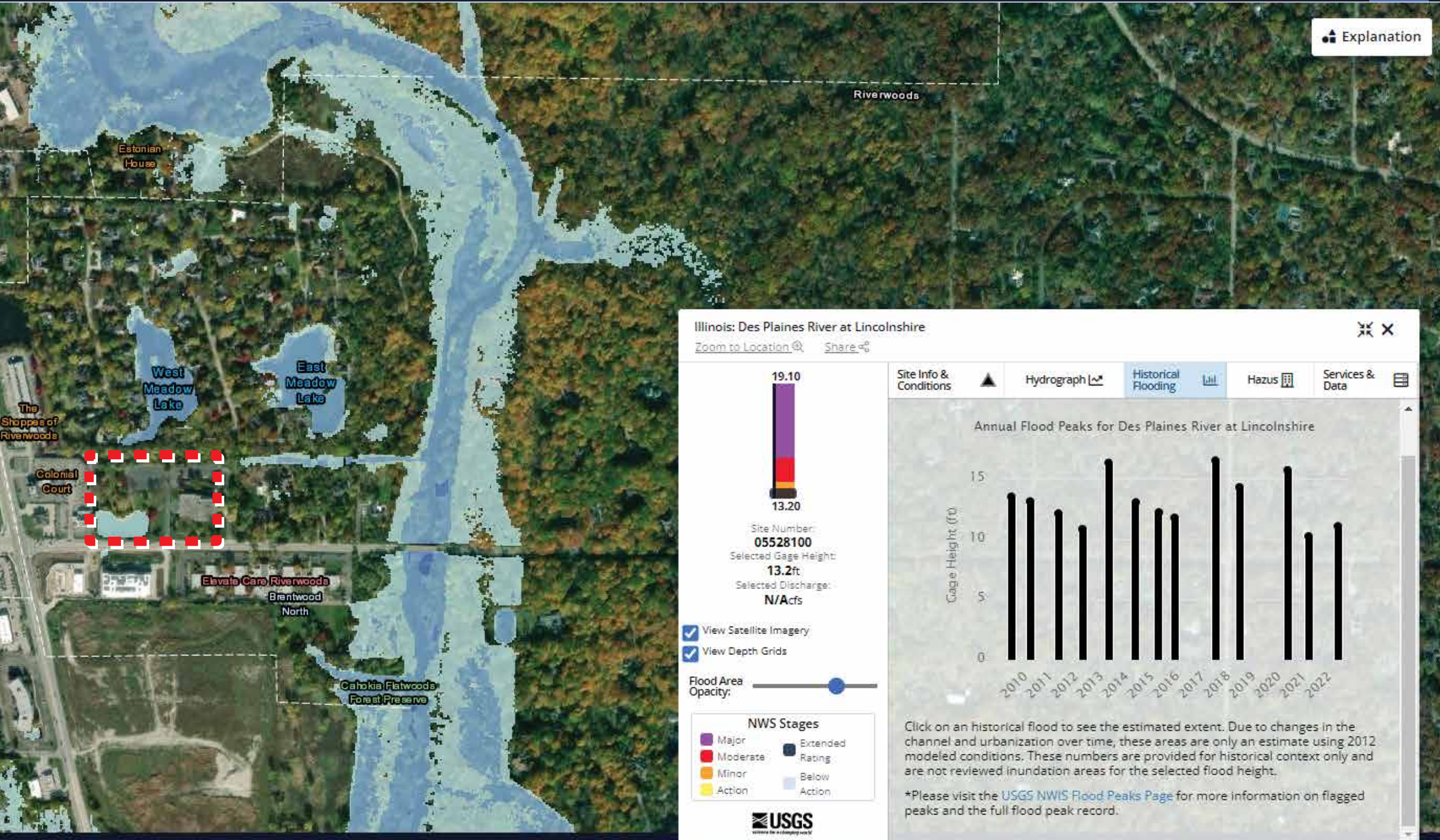
Click on an historical flood to see the estimated extent. Due to changes in the channel and urbanization over time, these areas are only an estimate using 2012 modeled conditions. These numbers are provided for historical context only and are not reviewed inundation areas for the selected flood height.

*Please visit the [USGS NWIS Flood Peaks Page](#) for more information on flagged peaks and the full flood peak record.

Annual Flood Peak Inundation Map 2017



Annual Flood Peak Inundation Map 2018



Annual Flood Peak Inundation Map 2020



Explanation

Illinois: Des Plaines River at Lincolnshire

Zoom to Location 🔍 Share 📄

Site Info & Conditions ▲ Hydrograph 📈 Historical Flooding 📊 Hazus 📄 Services & Data 📄

Annual Flood Peaks for Des Plaines River at Lincolnshire

Year	Gage Height (ft)
2010	13.5
2011	13.2
2012	12.2
2013	10.8
2014	16.2
2015	13.2
2016	12.2
2017	11.8
2018	16.5
2019	14.2
2020	15.8
2021	10.2
2022	11.2

Click on an historical flood to see the estimated extent. Due to changes in the channel and urbanization over time, these areas are only an estimate using 2012 modeled conditions. These numbers are provided for historical context only and are not reviewed inundation areas for the selected flood height.

*Please visit the [USGS NWS Flood Peaks Page](#) for more information on flagged peaks and the full flood peak record.

19.10
13.20

Site Number: **05528100**
Selected Gage Height: **16ft**
Selected Discharge: **N/Acfs**

View Satellite Imagery
 View Depth Grids

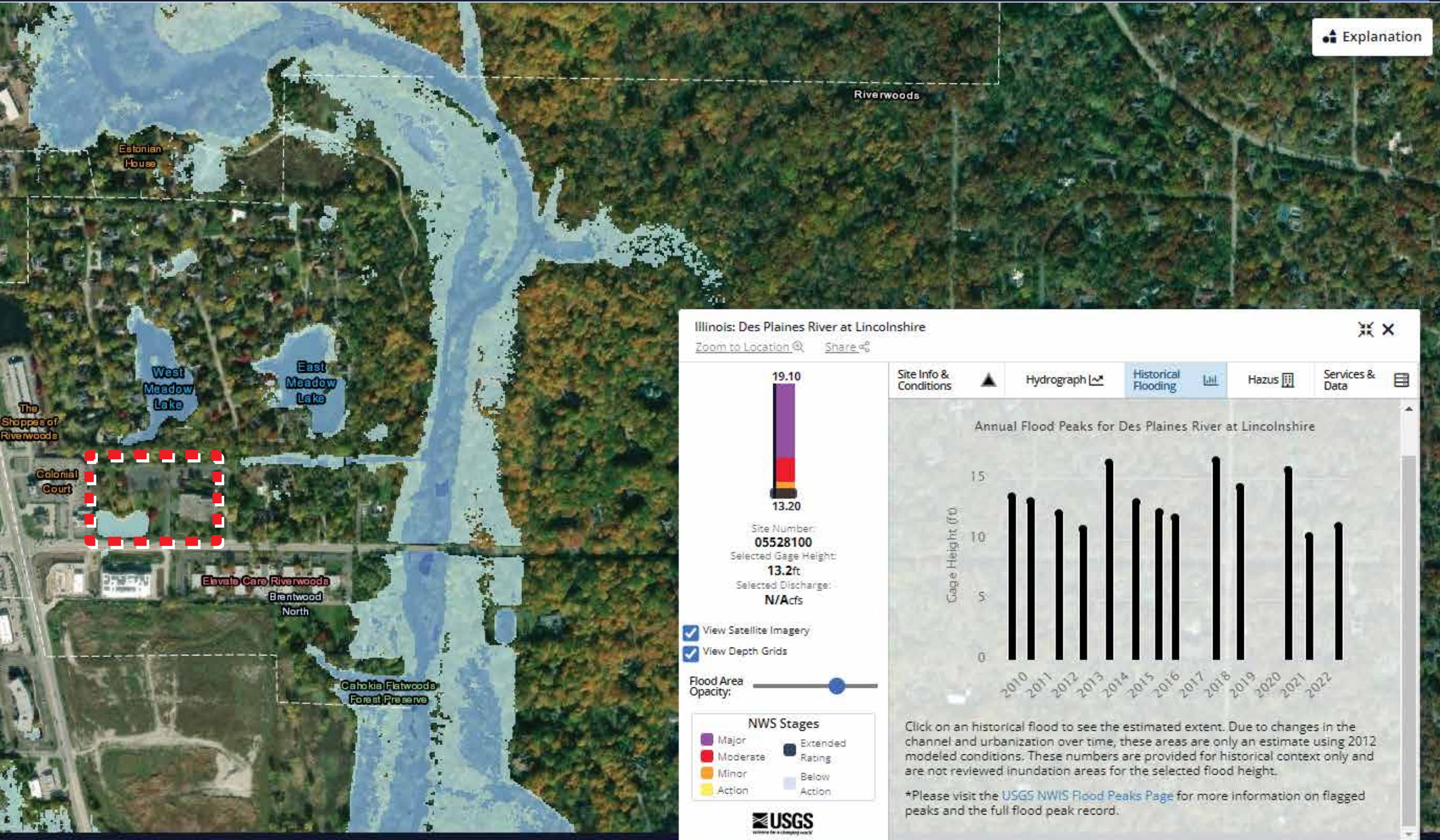
Flood Area Opacity:

NWS Stages

Major	Extended Rating
Moderate	Below Action
Minor	
Action	

USGS
United States Geological Survey

Annual Flood Peak Inundation Map 2021



Explanation

Site Info & Conditions Hydrograph **Historical Flooding** Hazus Services & Data

Annual Flood Peaks for Des Plaines River at Lincolnshire



Click on an historical flood to see the estimated extent. Due to changes in the channel and urbanization over time, these areas are only an estimate using 2012 modeled conditions. These numbers are provided for historical context only and are not reviewed inundation areas for the selected flood height.

*Please visit the [USGS NWIS Flood Peaks Page](#) for more information on flagged peaks and the full flood peak record.