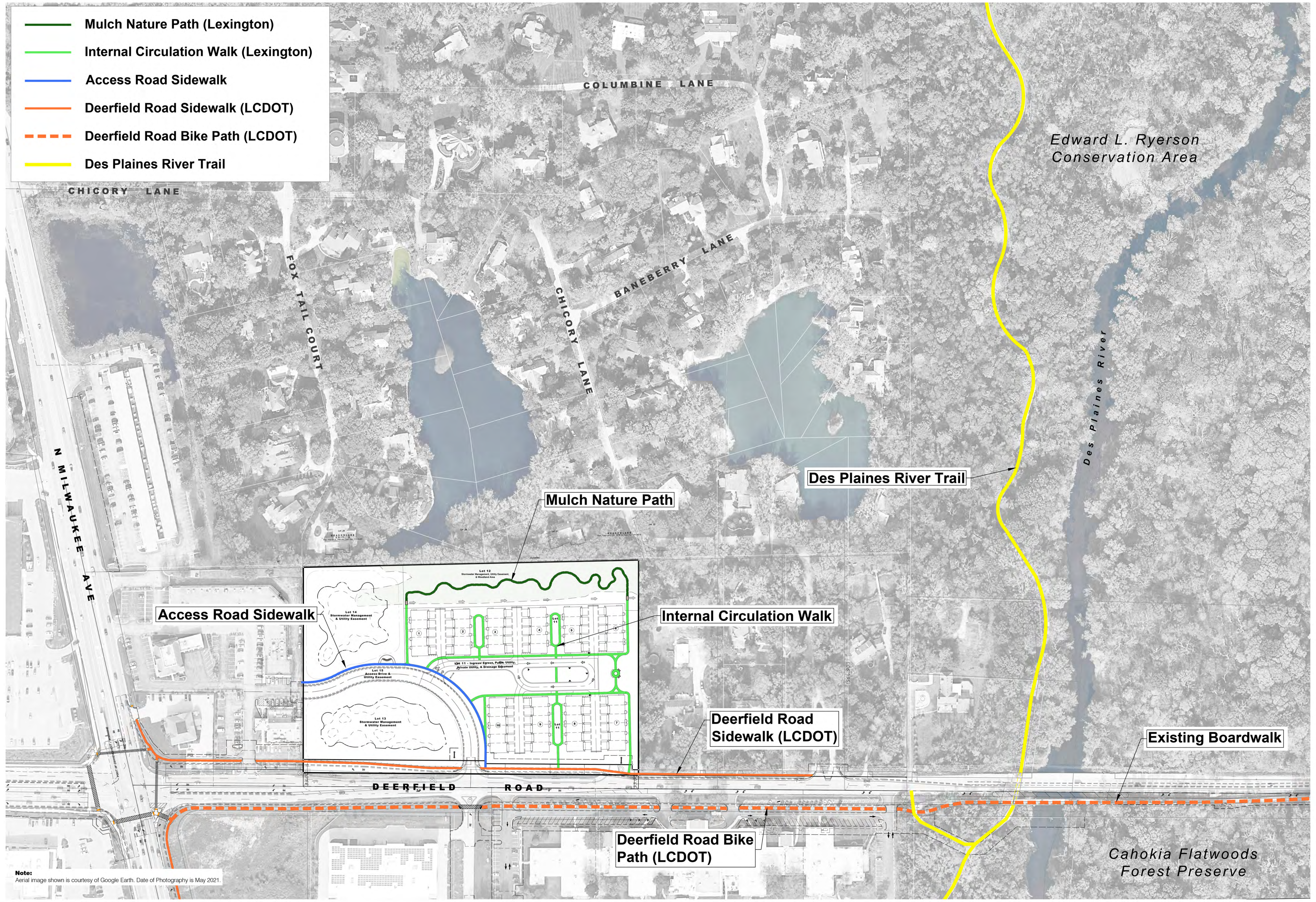
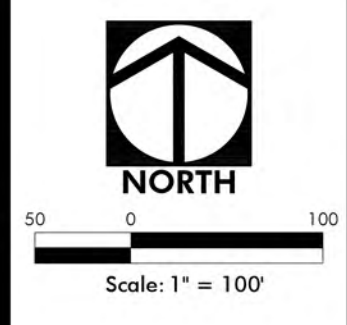


- Mulch Nature Path (Lexington)
- Internal Circulation Walk (Lexington)
- Access Road Sidewalk
- Deerfield Road Sidewalk (LCDOT)
- Deerfield Road Bike Path (LCDOT)
- Des Plaines River Trail



Note:
Aerial image shown is courtesy of Google Earth. Date of Photography is May 2021.

HAEGER ENGINEERING
consulting engineers • land surveyors
100 East State Parkway, Schaumburg, IL 60173 • Tel: 847.394.6600 Fax: 847.394.6698
www.haegerengineering.com

PEDESTRIAN CONNECTIVITY EXHIBIT
RIVERWOODS RESERVE
VILLAGE OF RIVERWOODS, LAKE COUNTY, ILLINOIS

Project Manager: T A S
Engineer: P A C
Date: 04-06-2023
Project No. 20147
Sheet 1