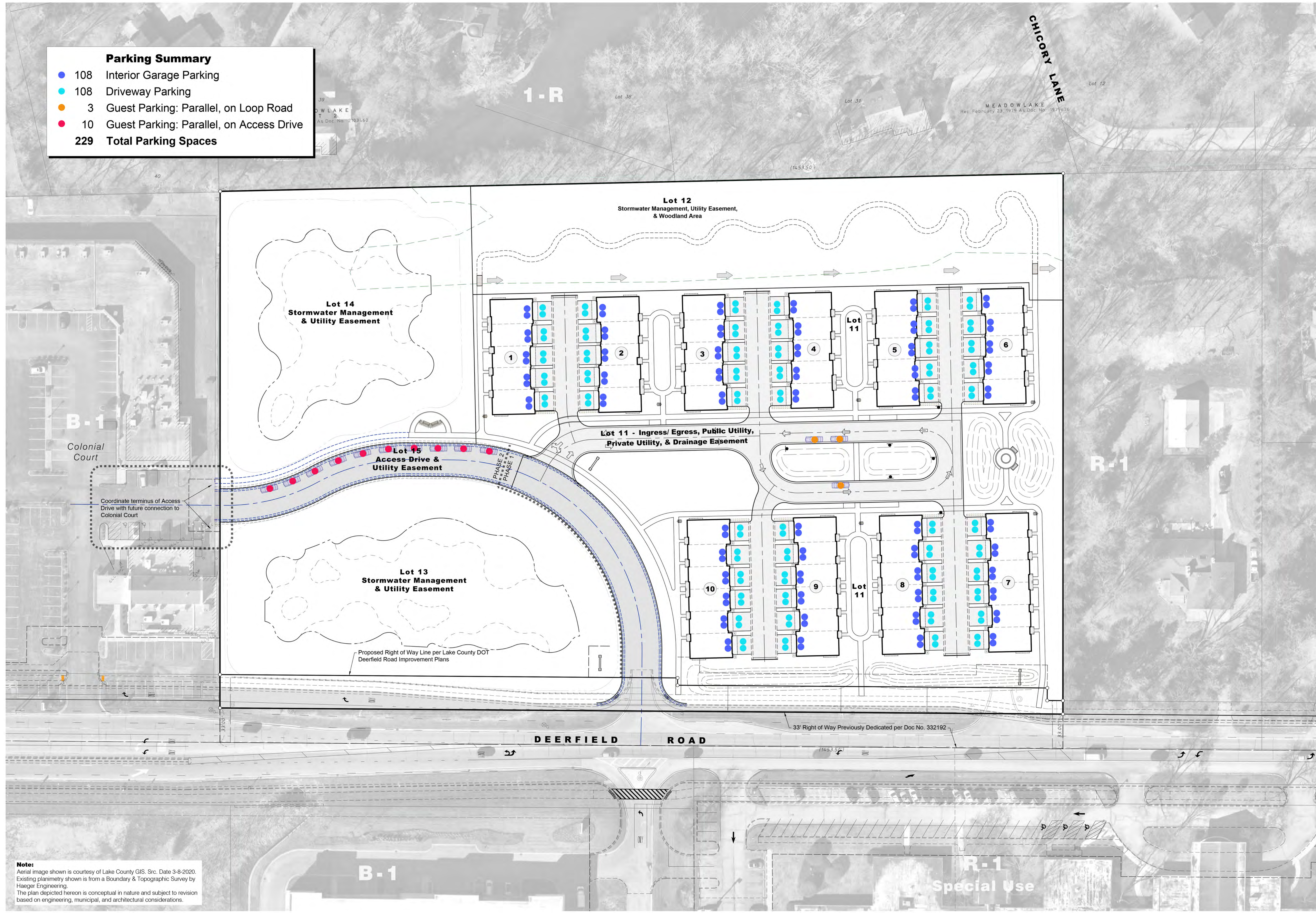


Parking Summary

● 108	Interior Garage Parking
● 108	Driveway Parking
● 3	Guest Parking: Parallel, on Loop Road
● 10	Guest Parking: Parallel, on Access Drive
229	Total Parking Spaces



Note:
 Aerial image shown is courtesy of Lake County GIS. Src. Date 3-9-2020.
 Existing planimetry shown is from a Boundary & Topographic Survey by Haeger Engineering.
 The plan depicted hereon is conceptual in nature and subject to revision based on engineering, municipal, and architectural considerations.

HAEGER ENGINEERING
 consulting engineers • land surveyors
 100 East State Parkway, Schaumburg, IL 60173 • Tel: 847.394.6600 Fax: 847.394.6608
 Illinois Professional Design Firm License No. 184-003152
 www.haegerengineering.com

PARKING EXHIBIT
RIVERWOODS RESERVE
 VILLAGE OF RIVERWOODS, LAKE COUNTY, ILLINOIS

Project Manager: T A S
 Engineer: P A C
 Date: 04-06-2023
 Project No. 20147
 Sheet 1