

# RIVERWOODS RESERVE PHASE 2 ENGINEERING PLANS LEXINGTON HOMES

SECTION 26 TOWNSHIP 43 NORTH RANGE 11 EAST  
RIVERWOODS, ILLINOIS  
LAKE COUNTY

**DEVELOPER:**

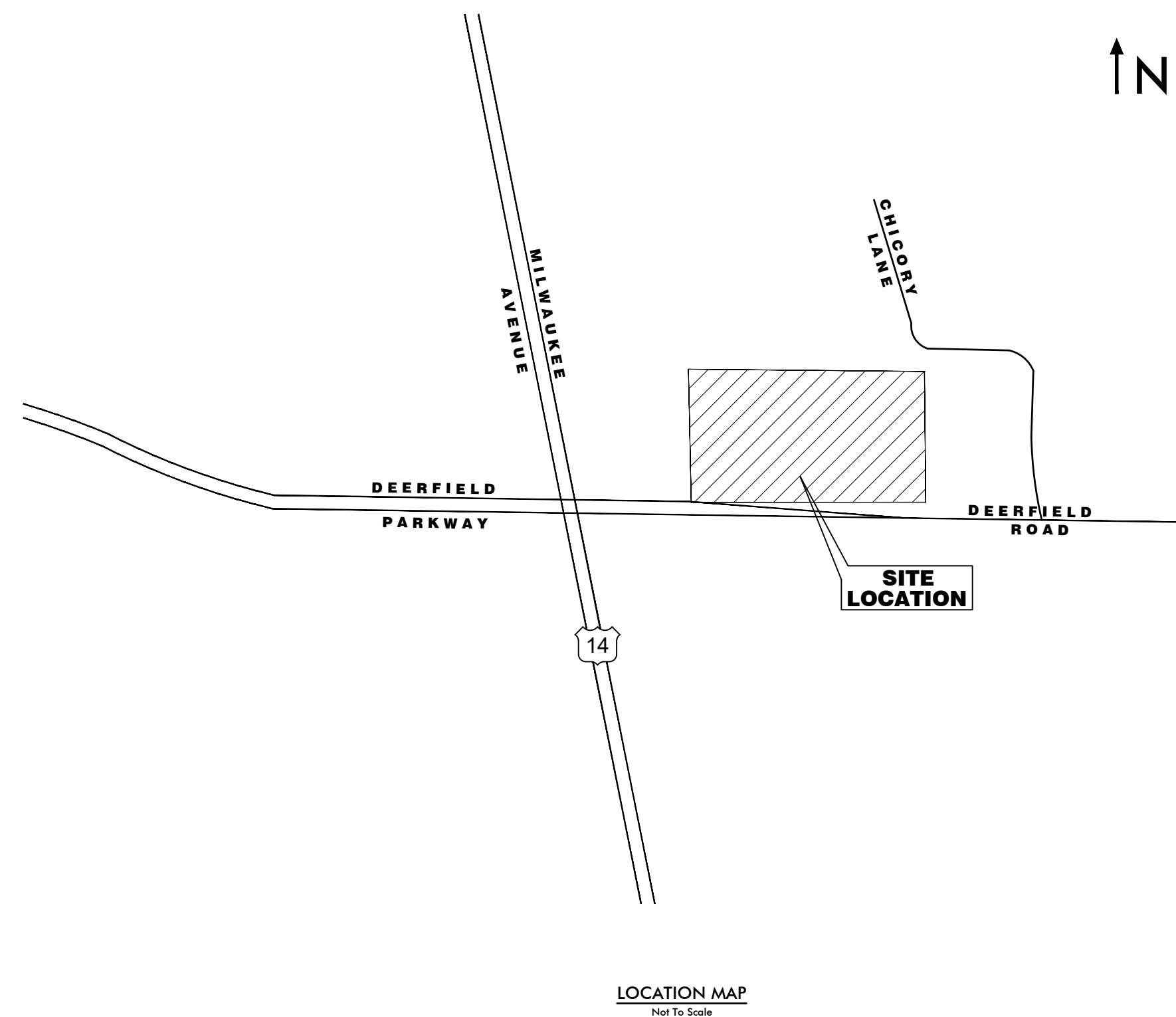
Lexington Homes  
1731 Marcey Street, Suite 200  
Chicago, IL 60614  
Tel: 773-360-0300  
lexingtonchicago.com

**PREPARED BY:**

Haeger Engineering LLC  
Illinois Prof. Design Firm #184-003152  
100 E. State Parkway  
Schaumburg, IL 60173  
Tel: 847-394-6600  
Fax: 847-394-6608  
www.haegerengineering.com

**VILLAGE OF RIVERWOODS**

300 Portwine Road  
Riverwoods, IL 60015  
Tel: 847-945-3990  
Fax: 847-945-4059



INDEX TO SHEETS	
NO.	DESCRIPTION
C1.0	TITLE SHEET
C2.0	EXISTING CONDITIONS PLAN
C3.0	PRELIMINARY DEMOLITION PLAN
C4.0	PRELIMINARY GEOMETRY PLAN
C5.0	PRELIMINARY GRADING PLAN
C6.0	PRELIMINARY UTILITY PLAN
C7.0	PRELIMINARY EROSION CONTROL PLAN

Benchmark	
<b>Site Benchmarks</b>	
CP #4269 (County BM)	Description: Notch Top of Wall NW Corner Bridge
Elevation: 649.42	NAVD 88 (Geoid 12A)
CP # 601 (See Survey)	Description: Cross Notch
Elevation: 644.24	NAVD 88 (Geoid 12A)
CP # 603 (See Survey)	Description: Cross Notch
Elevation: 644.98	NAVD 88 (Geoid 12A)
CP #606 (See Survey)	Description: PK Nail
Elevation: 643.95	NAVD 88 (Geoid 12A)

Existing Symbol	LEGEND	Proposed Symbol
	Storm Sewer Manhole	
	Catch Basin	
	Inlet	
	Flared End Section	
	Headwall	
	Area Drain	
	Sanitary Sewer Manhole	
	Clean Out	
	Storm Sewer	
	Storm Sewer Service	
	Perforated Underdrain	
	Sanitary Sewer	
	Sanitary Sewer Service	
	Combined Sewer	
	Force Main	
	Water Main	
	Water Main Service	
	Fire Hydrant	
	Valve Vault	
	Valve Box	
	B-Box	
	Well Head	
	Light Pole	
	Hand Hole	
	Fence	
	Pipe Bollard	
	Sign	
	Gas Valve	
	Gas Line	
	Electric Line	
	Overhead Utility Line	
	Fiber Optic Line	
	Electrical Pedestal	
	Electric Manhole	
	Guy Wire	
	Utility Pole	
	Telephone Pedestal	
	Telephone Manhole	
	Telephone Line	
	Cable TV Line	
	Cable TV Pedestal	
	Flagpole	
	Mailbox	
	Handicapped Parking Stall	
	Number of Parking Stalls	
	Curb & Gutter	
	Depressed Curb	
	Retaining Wall	
	Curb Elevation and Gutter/Pavement Elevation	
	Pavement Elevation	
	Sidewalk Elevation	
	Ground Elevation	
	Top of Wall Elevation	
	Bottom of Wall Elevation	
	Open Lid Frame & Grate	
	Closed Lid Frame & Lid	
	Garage Floor	
	Top of Foundation	
	Swale	
	Hardscape Flow	
	Softscape Flow	
	Contour Line	
	Wetland	
	Wetland Buffer	
	Normal Water Level	
	High Water Level	
	Flood Plain	
	Flood Way	
	Deciduous Tree	
	Coniferous Tree	
	Bush	
	Brushline	
	Soil Boring	
	Over Land Flow Route	



Know what's below.  
Call before you dig.

Note:  
Call 811 at least 48 hours, excluding weekends and holidays, before you dig.

**HAEGER ENGINEERING**  
consulting engineers • land surveyors  
100 East State Parkway, Schaumburg, IL 60173 • Tel: 847.394.6600 Fax: 847.394.6608  
Illinois Professional Design Firm License No. 184-003152  
www.haegerengineering.com

**RIVERWOODS RESERVE  
PHASE 2 ENGINEERING PLANS**  
3750 DEERFIELD ROAD, RIVERWOODS, ILLINOIS

Project Manager: T A S  
Engineer: C J B  
Date: 12/06/2021  
Project No. 20-147  
Sheet **C1.0** / C7

UPDATE PROJECT NAME  
REVISED TO REFLECT PHASE 1 / PHASE 2  
Revision

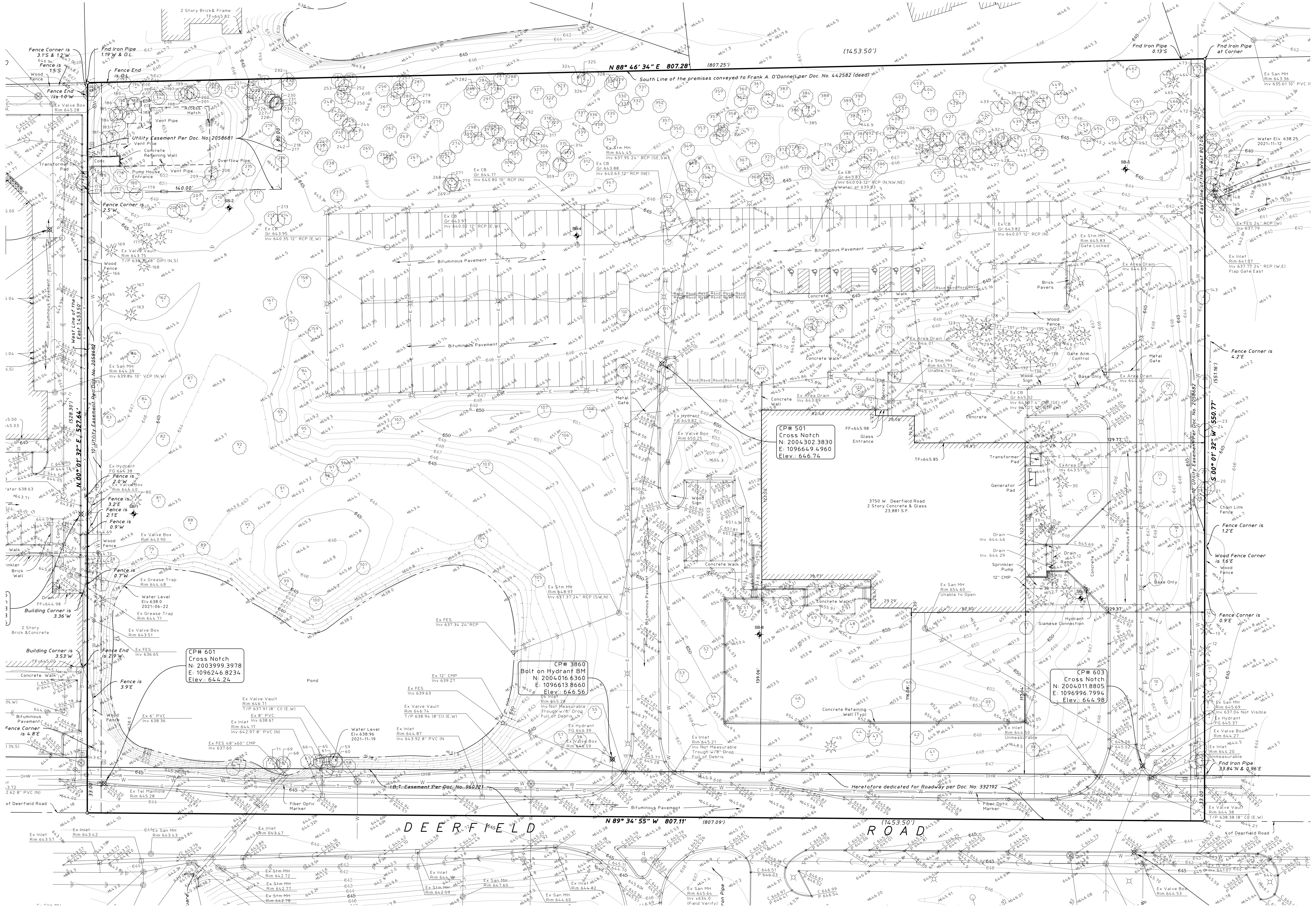
9-8-2022  
7/18/2022  
Date

2  
1  
No.





NORTH  
Scale: 1" = 30'



**HAEGER ENGINEERING**  
consulting engineers • land surveyors  
100 East State Parkway, Schaumburg, IL 60173 • Tel: 847.394.6600 Fax: 847.394.6608  
Illinois Professional Design Firm License No. 184-003153  
www.haegerengineering.com

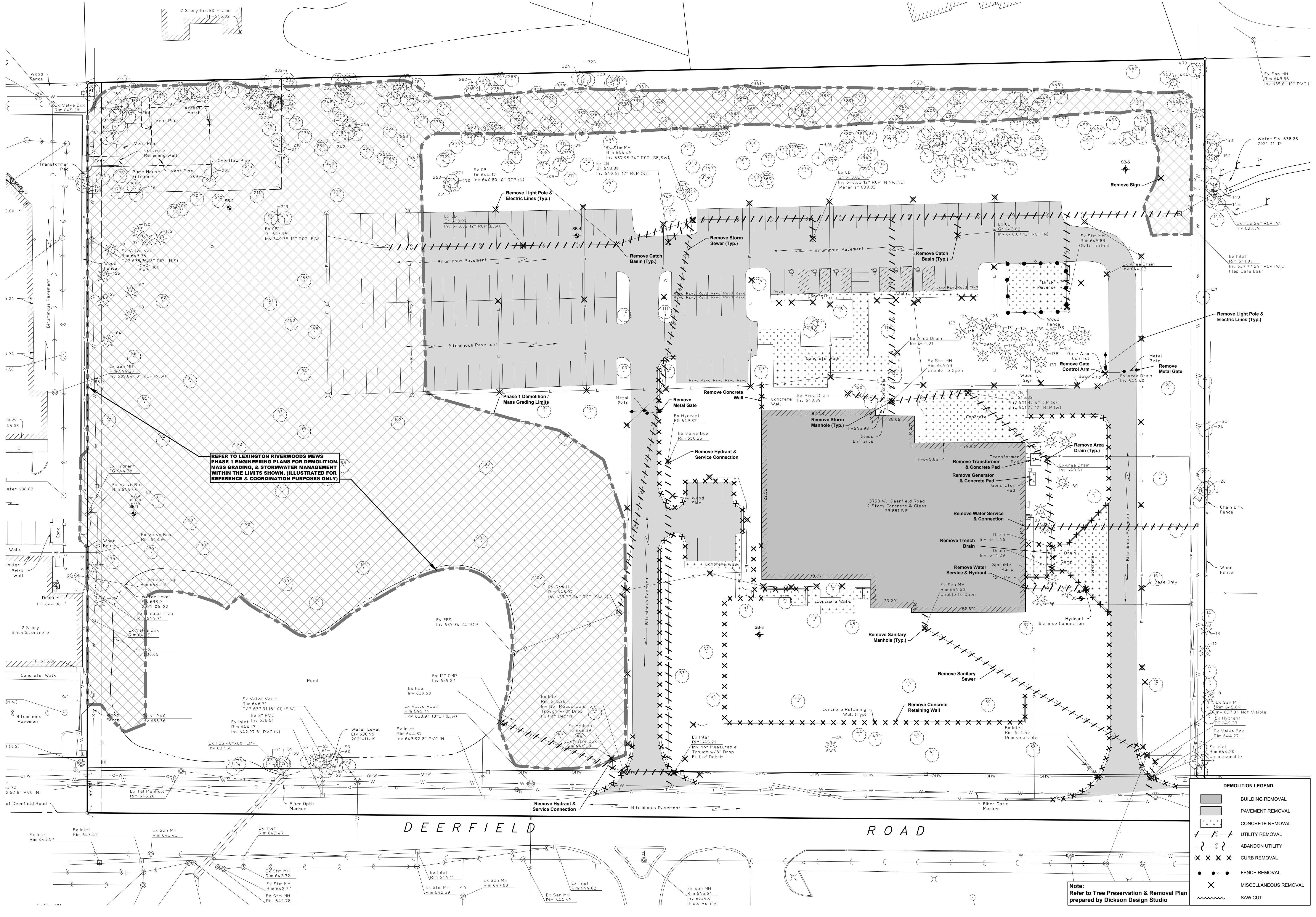
**EXISTING CONDITIONS PLAN**  
**RIVERWOODS RESERVE**  
**PHASE 2 ENGINEERING PLANS**  
3750 DEERFIELD ROAD, RIVERWOODS, ILLINOIS

Project Manager: T A S  
Engineer: C J B  
Date: 12/06/2021  
Project No. 20-147  
Sheet **C2.0** of 7

UPDATE PROJECT NAME  
REVISED TO REFLECT PHASE 1 / PHASE 2  
9-8-2022  
7/18/2022  
Date

No.





UPDATE PROJECT NAME  
REVISED TO REFLECT PHASE 1 / PHASE 2

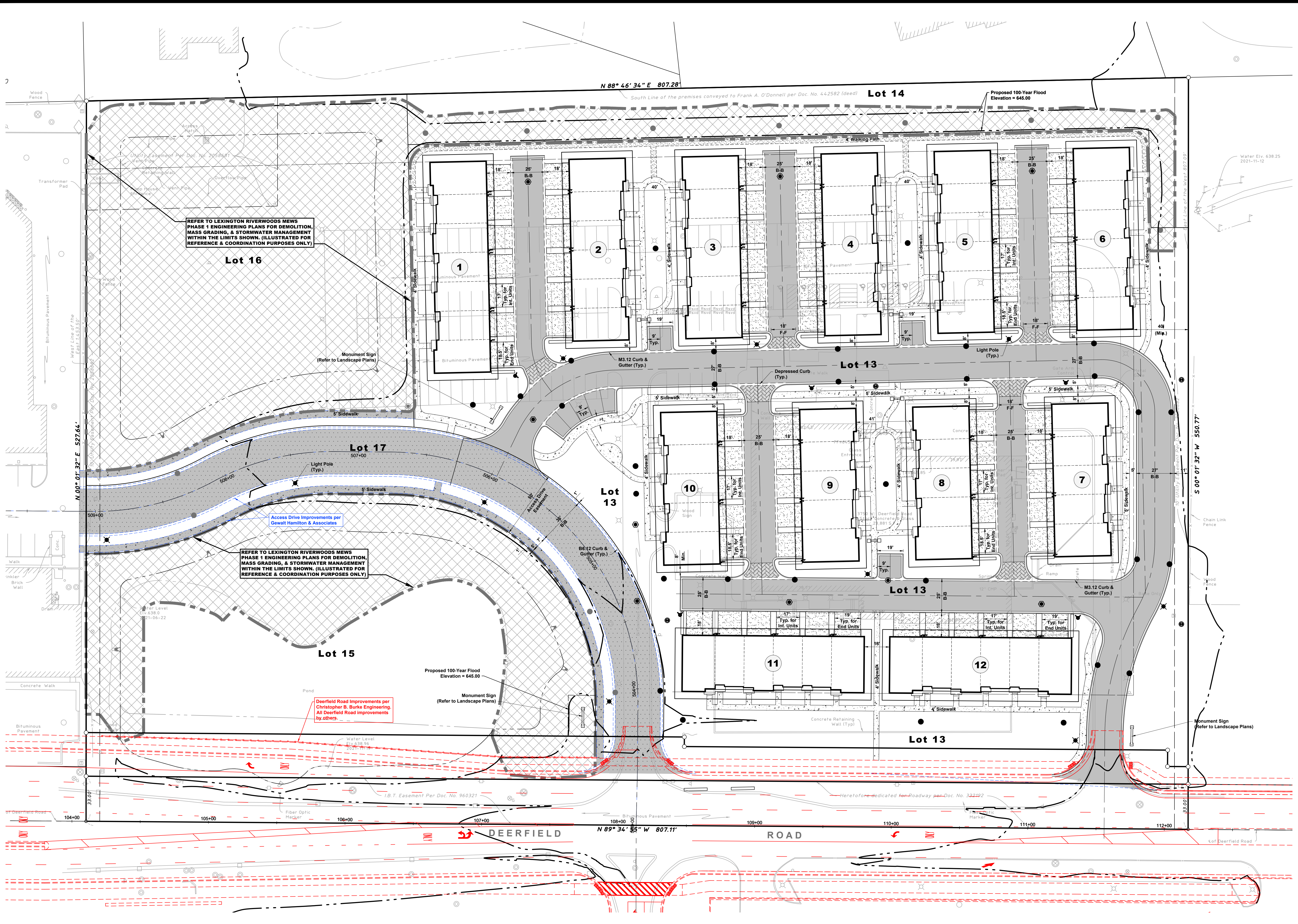
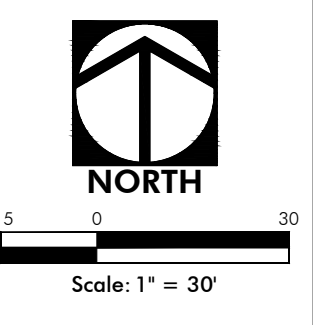
No.	Date	Revision
1	7/18/2022	
2	9/8/2022	

**HAEGER ENGINEERING**  
consulting engineers • land surveyors  
100 East State Parkway, Schaumburg, IL 60173 • Tel: 847.394.6600 Fax: 847.394.6608  
Illinois Professional Design Firm License No. 184-003152  
www.haegerengineering.com

**PRELIMINARY DEMOLITION PLAN**  
**RIVERWOODS RESERVE**  
**PHASE 2 ENGINEERING PLANS**  
3750 DEERFIELD ROAD, RIVERWOODS, ILLINOIS

Project Manager: T A S  
Engineer: C J B  
Date: 12/06/2021  
Project No. 20-147  
Sheet **C3.0** of C7





REFER TO LEXINGTON RIVERWOODS MEWS PHASE 1 ENGINEERING PLANS FOR DEMOLITION, MASS GRADING, & STORMWATER MANAGEMENT WITHIN THE LIMITS SHOWN. (ILLUSTRATED FOR REFERENCE & COORDINATION PURPOSES ONLY)

REFER TO LEXINGTON RIVERWOODS MEWS PHASE 1 ENGINEERING PLANS FOR DEMOLITION, MASS GRADING, & STORMWATER MANAGEMENT WITHIN THE LIMITS SHOWN. (ILLUSTRATED FOR REFERENCE & COORDINATION PURPOSES ONLY)

Deerfield Road Improvements per Christopher B. Burke Engineering. All Deerfield Road improvements by others.

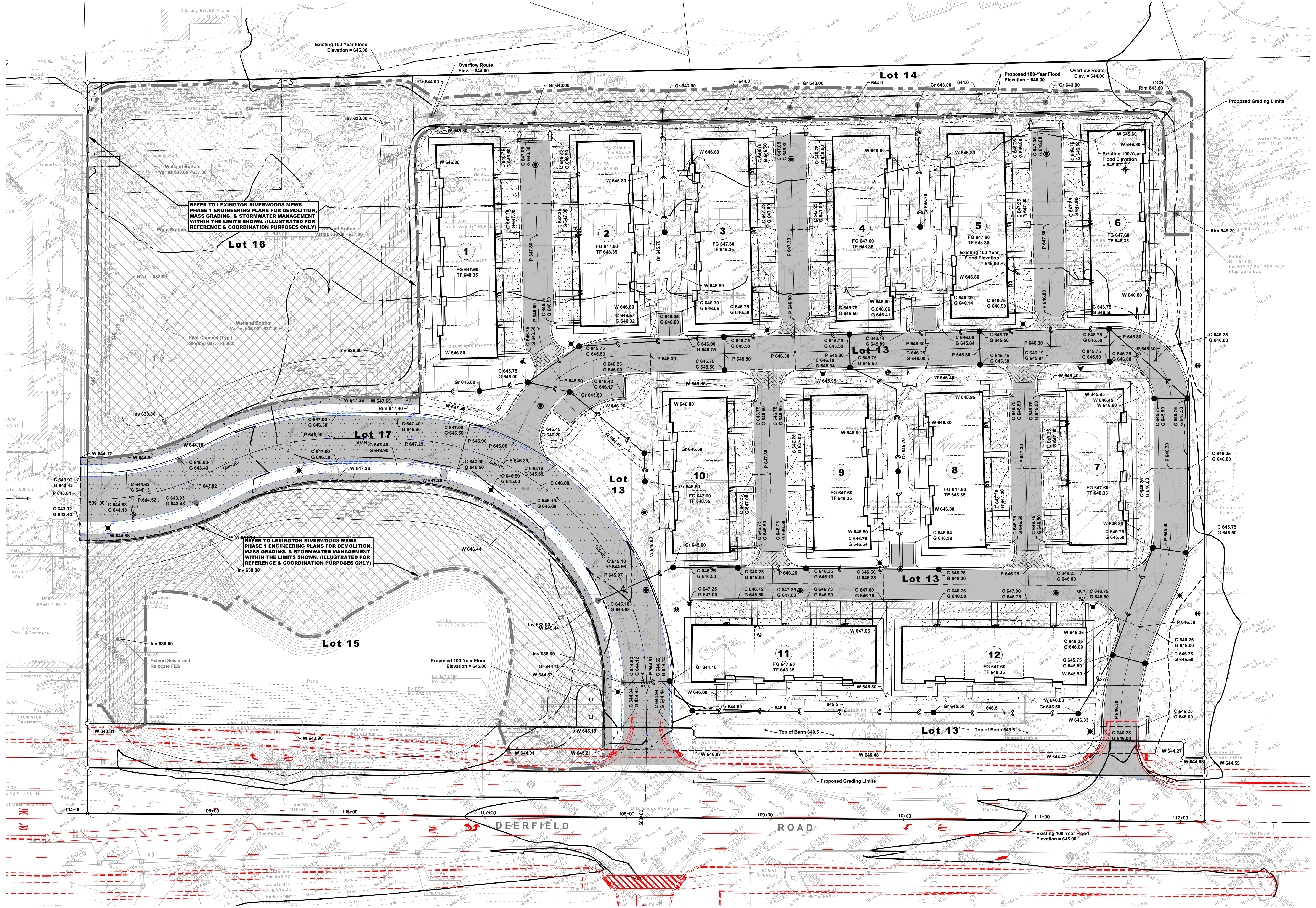
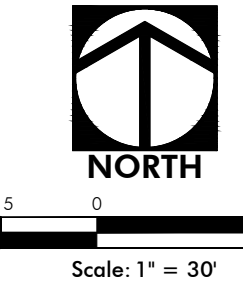
No.	Date	Revision
1	7/18/2022	REVISED TO REFLECT PHASE 1 / PHASE 2
2	9/8/2022	UPDATE PROJECT NAME

**HAEGER ENGINEERING**  
 consulting engineers • land surveyors  
 100 East State Parkway, Schaumburg, IL 60173 • Tel: 847.394.6600 Fax: 847.394.6608  
 Illinois Professional Design Firm License No. 184-003142  
 www.haegerengineering.com

**PRELIMINARY GEOMETRY PLAN**  
**RIVERWOODS RESERVE**  
**PHASE 2 ENGINEERING PLANS**  
 3750 DEERFIELD ROAD, RIVERWOODS, ILLINOIS

Project Manager: T A S  
 Engineer: C J B  
 Date: 12/06/2021  
 Project No. 20-147  
 Sheet **C4.0**





REFER TO LEXINGTON RIVERWOODS MEWS  
PHASE 1 ENGINEERING PLANS FOR DEMOLITION,  
MASS GRADING, & STORMWATER MANAGEMENT  
WITHIN THE LIMITS SHOWN. (ILLUSTRATED FOR  
REFERENCE & COORDINATION PURPOSES ONLY)

Lot 16

Lot 15

Lot 17

Lot 13

Lot 13

Lot 13

Lot 13

Lot 14

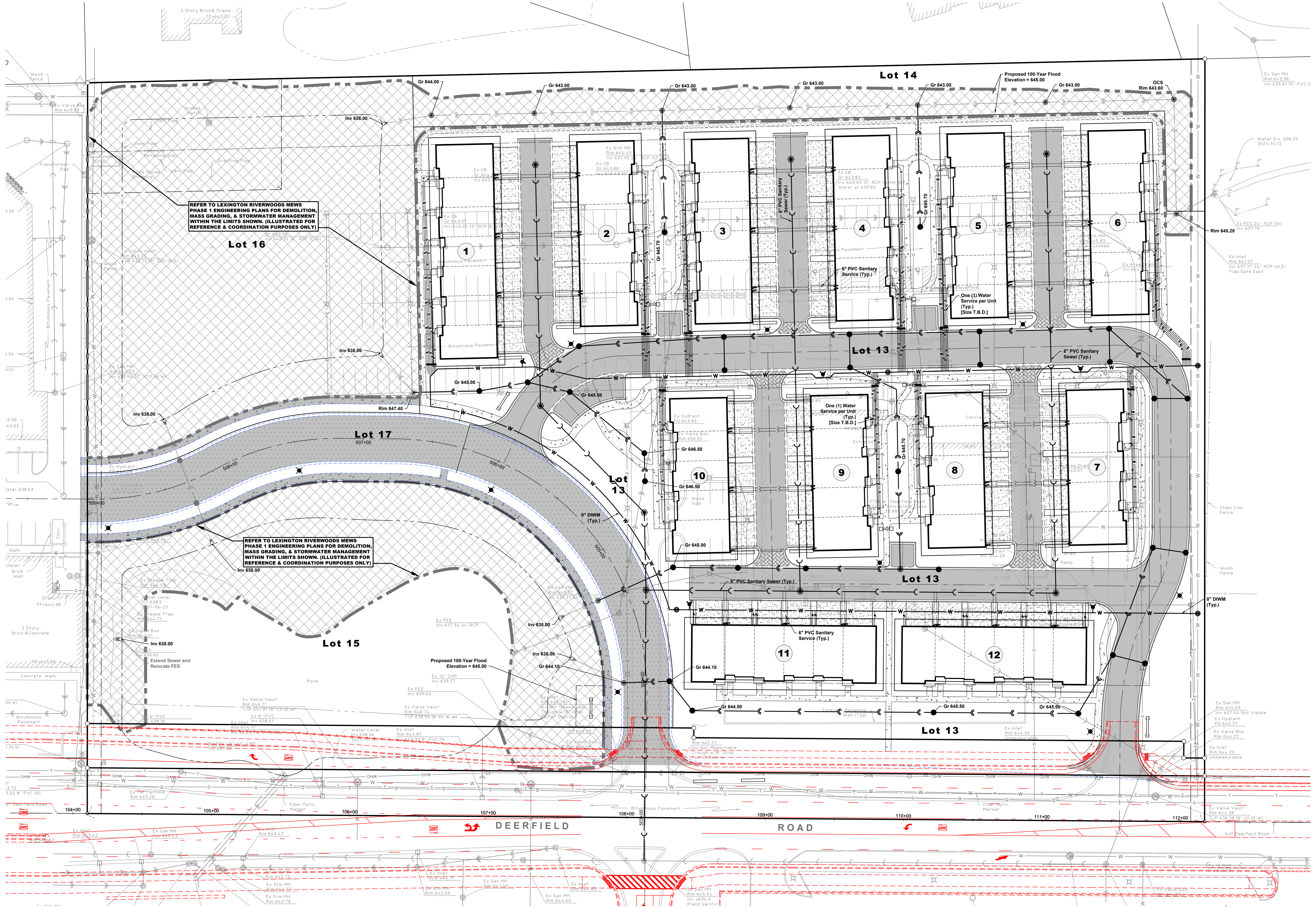
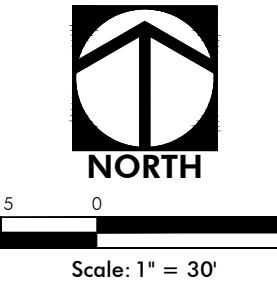
**HAEGER ENGINEERING**  
consulting engineers • land surveyors  
100 East State Parkway, Schaumburg, IL 60173 • Tel: 847.394.6000 Fax: 847.394.6498  
Illinois Professional Design Firm License No. 184-003142  
www.haegerengineering.com

**PRELIMINARY GRADING PLAN**  
**RIVERWOODS RESERVE**  
**PHASE 2 ENGINEERING PLANS**  
3750 DEERFIELD ROAD, RIVERWOODS, ILLINOIS

Project Manager: T A S  
Engineer: C J B  
Date: 12/06/2021  
Project No: 20-147  
Sheet **C5.0**

UPDATE PROJECT NAME  
7/18/2022  
REVISION TO REFLECT PHASE 1 / PHASE 2  
Revision





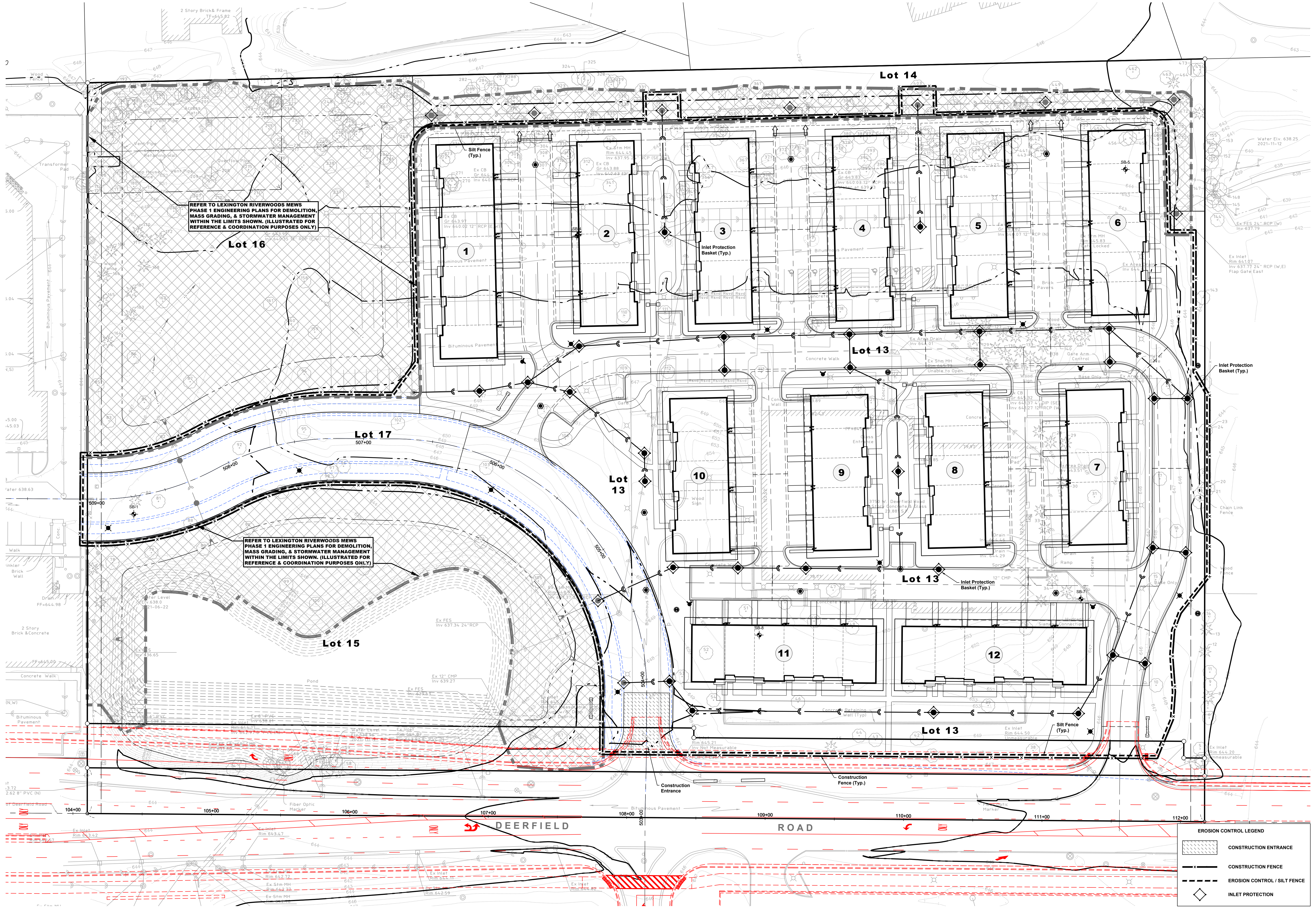
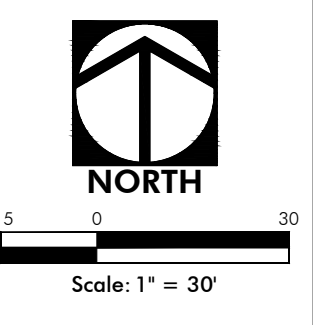
**HAEGER ENGINEERING**  
 consulting engineers • land surveyors  
 100 East State Parkway, Schaumburg, IL 60173 • Tel: 847.394.6600 Fax: 847.394.6608  
 Illinois Professional Design Firm License No. 184-003143  
 www.haegerengineering.com

**PRELIMINARY UTILITY PLAN**  
**RIVERWOODS RESERVE**  
**PHASE 2 ENGINEERING PLANS**  
 3750 DEERFIELD ROAD, RIVERWOODS, ILLINOIS

Project Manager: T A S  
 Engineer: C J B  
 Date: 12/06/2021  
 Project No. 20-147  
 Sheet **C6.0**

No.	Date	Revision
1	7/18/2022	UPDATE PROJECT NAME REVISED TO REFLECT PHASE 1 / PHASE 2
2		





REFER TO LEXINGTON RIVERWOODS MEWS PHASE 1 ENGINEERING PLANS FOR DEMOLITION, MASS GRADING, & STORMWATER MANAGEMENT WITHIN THE LIMITS SHOWN. (ILLUSTRATED FOR REFERENCE & COORDINATION PURPOSES ONLY)

REFER TO LEXINGTON RIVERWOODS MEWS PHASE 1 ENGINEERING PLANS FOR DEMOLITION, MASS GRADING, & STORMWATER MANAGEMENT WITHIN THE LIMITS SHOWN. (ILLUSTRATED FOR REFERENCE & COORDINATION PURPOSES ONLY)

**EROSION CONTROL LEGEND**

	CONSTRUCTION ENTRANCE
	CONSTRUCTION FENCE
	EROSION CONTROL / SILT FENCE
	INLET PROTECTION

**HAEGER ENGINEERING**  
 consulting engineers • land surveyors  
 100 East State Parkway, Schaumburg, IL 60173 • Tel: 847.394.6600 Fax: 847.394.6608  
 Illinois Professional Design Firm License No. 184-003152  
 www.haegerengineering.com

**PRELIMINARY EROSION CONTROL PLAN**  
**RIVERWOODS RESERVE**  
**PHASE 2 ENGINEERING PLANS**  
 3750 DEERFIELD ROAD, RIVERWOODS, ILLINOIS

Project Manager: T A S  
 Engineer: C J B  
 Date: 12/06/2021  
 Project No. 20-147  
 Sheet **C7.0**

UPDATE PROJECT NAME  
 REVISED TO REFLECT PHASE 1 / PHASE 2  
 Revision

9/8/2022  
 7/18/2022  
 Date

No.