



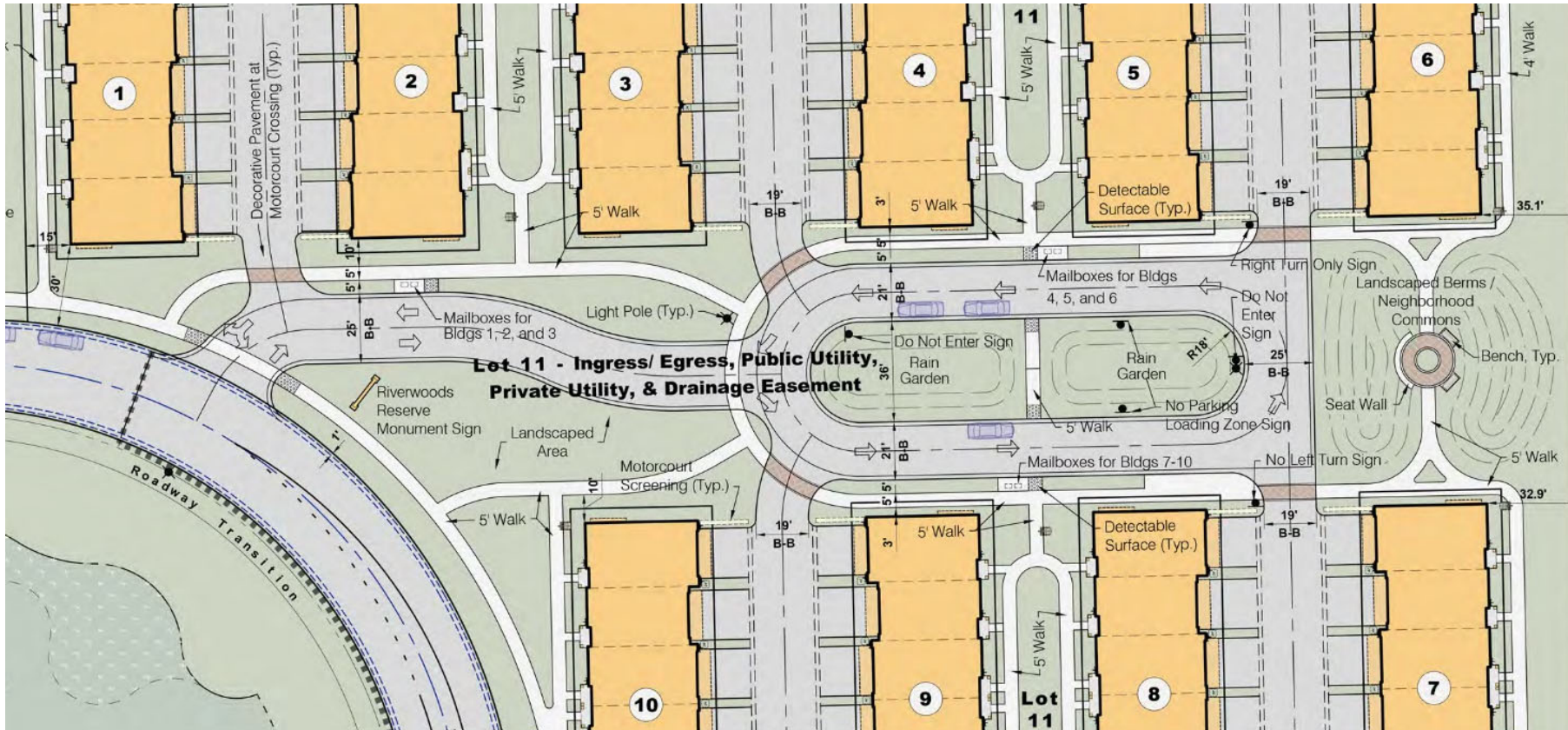
LexingtonHomes

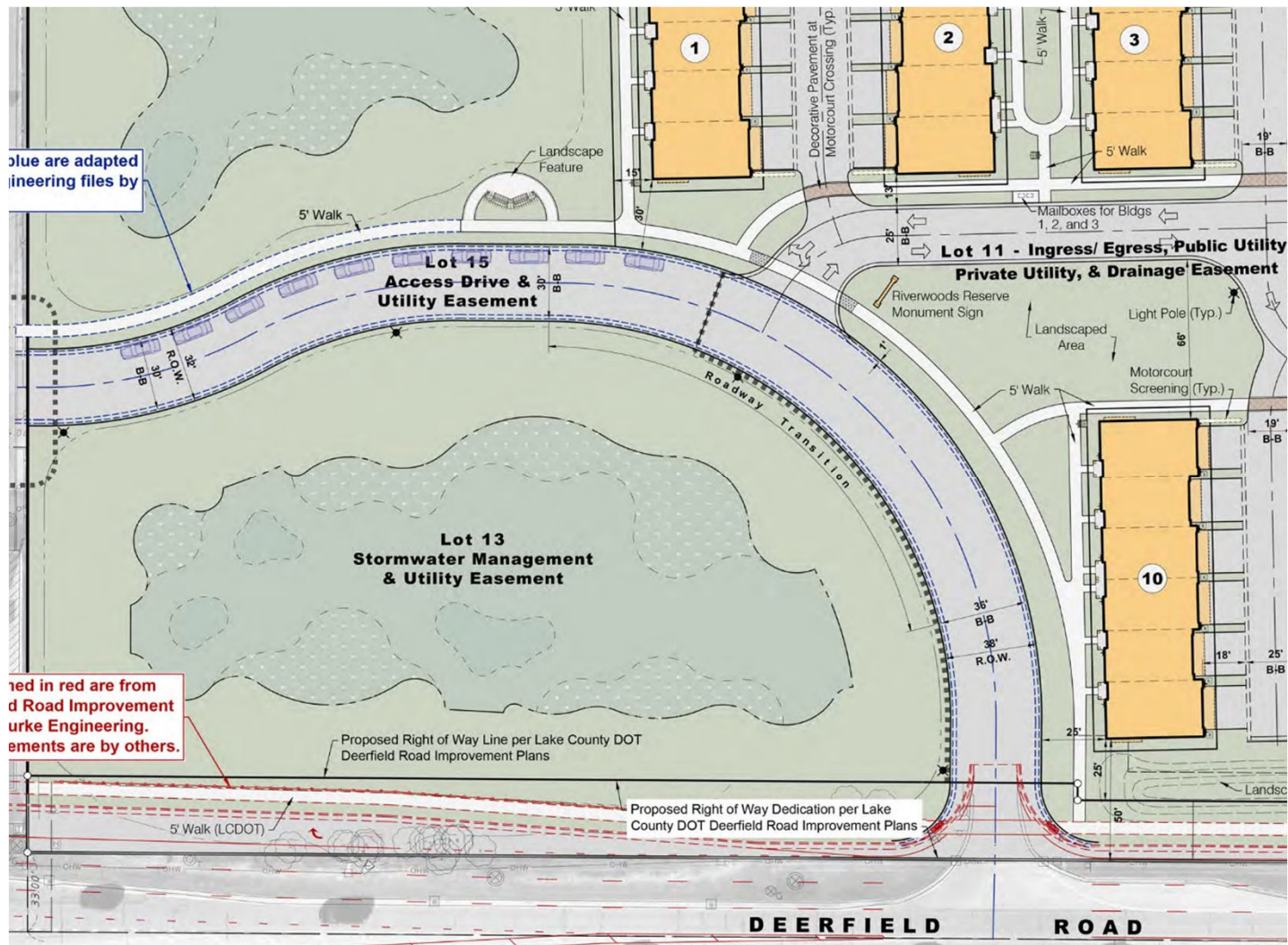
Riverwoods Reserve

BOARD OF TRUSTEES MEETING

JUNE 20, 2023

Note: All renderings/perspectives shown are for illustration purposes only and depict plant sizing post-installation by +/-10 years.





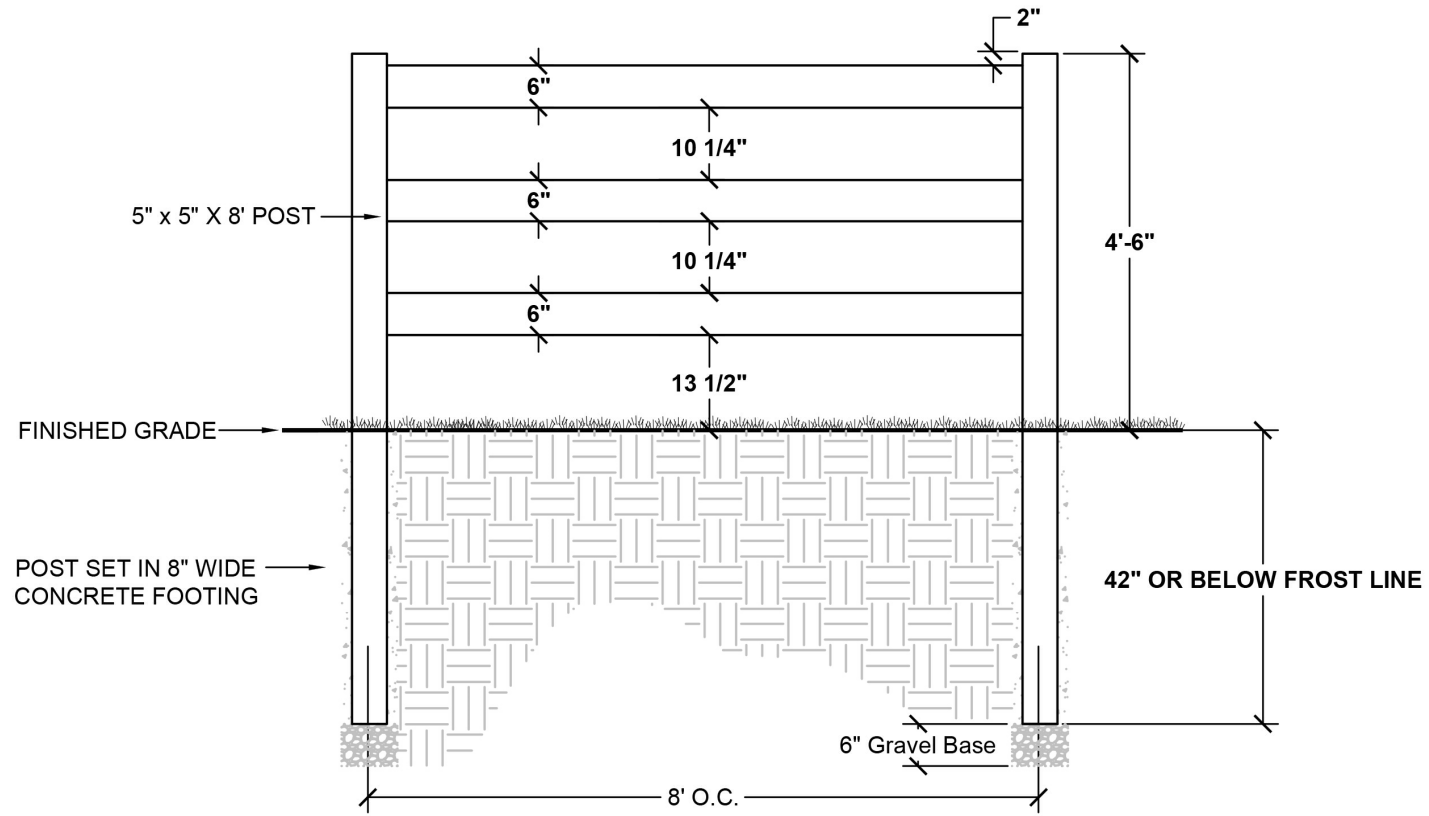
Blue are adapted engineering files by

Red in red are from updated Road Improvement Burke Engineering. Easements are by others.

- 32' R.O.W.
- 30' B-B
- 10 Parking Spaces Along Access Road







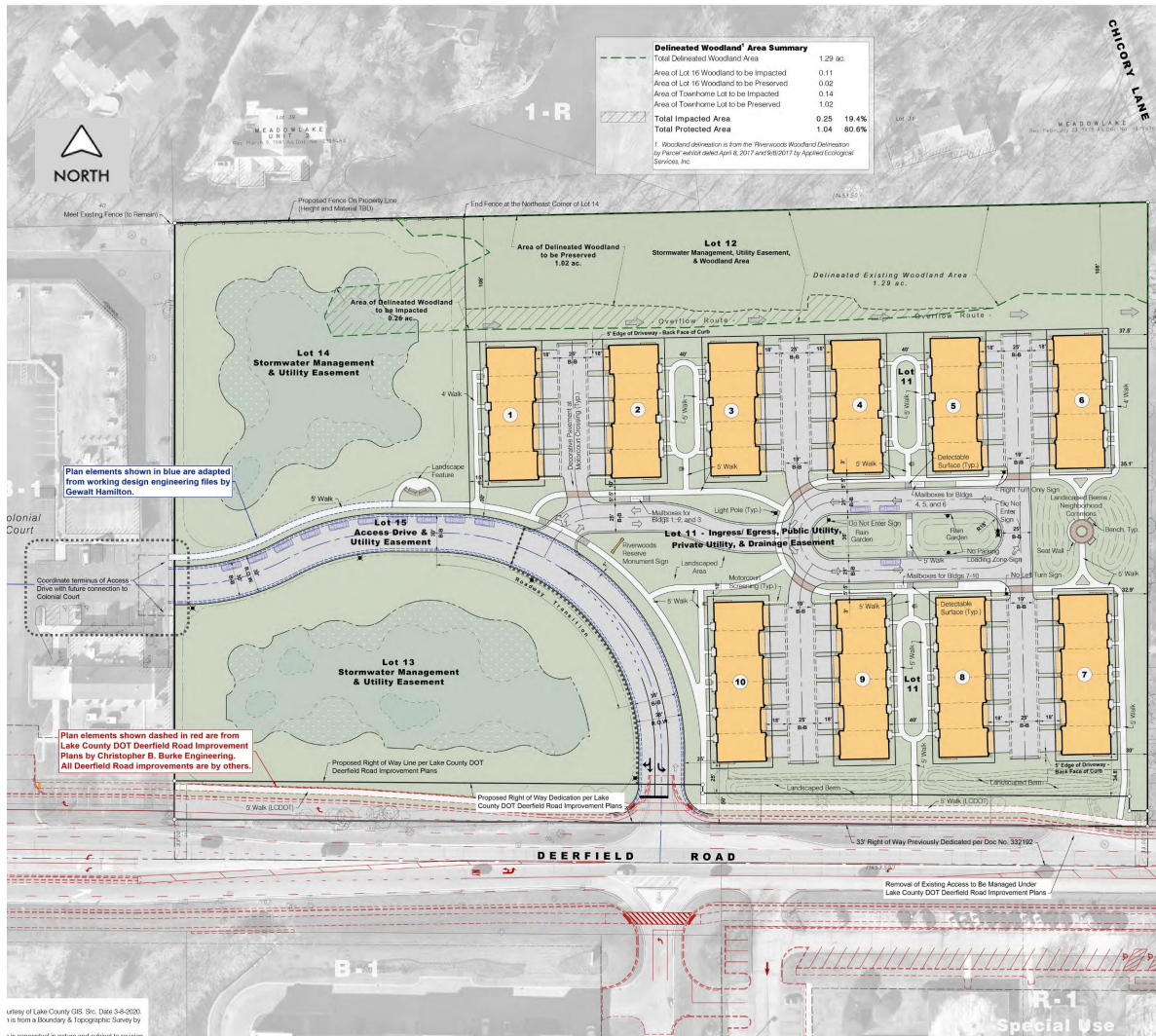


Riverwoods Reserve



LexingtonHomes
Yesterday. Today. Always.

Thank You | Open Discussion



Site Data

Gross Property Area	9.38 ac.
Rear Load Townhomes	54 Units
Net Density	5.8 DU/ Ac.

Building Separation

Front - Front	40'
Back - Back	61'

Roadway Width (Back/ Back Curb)

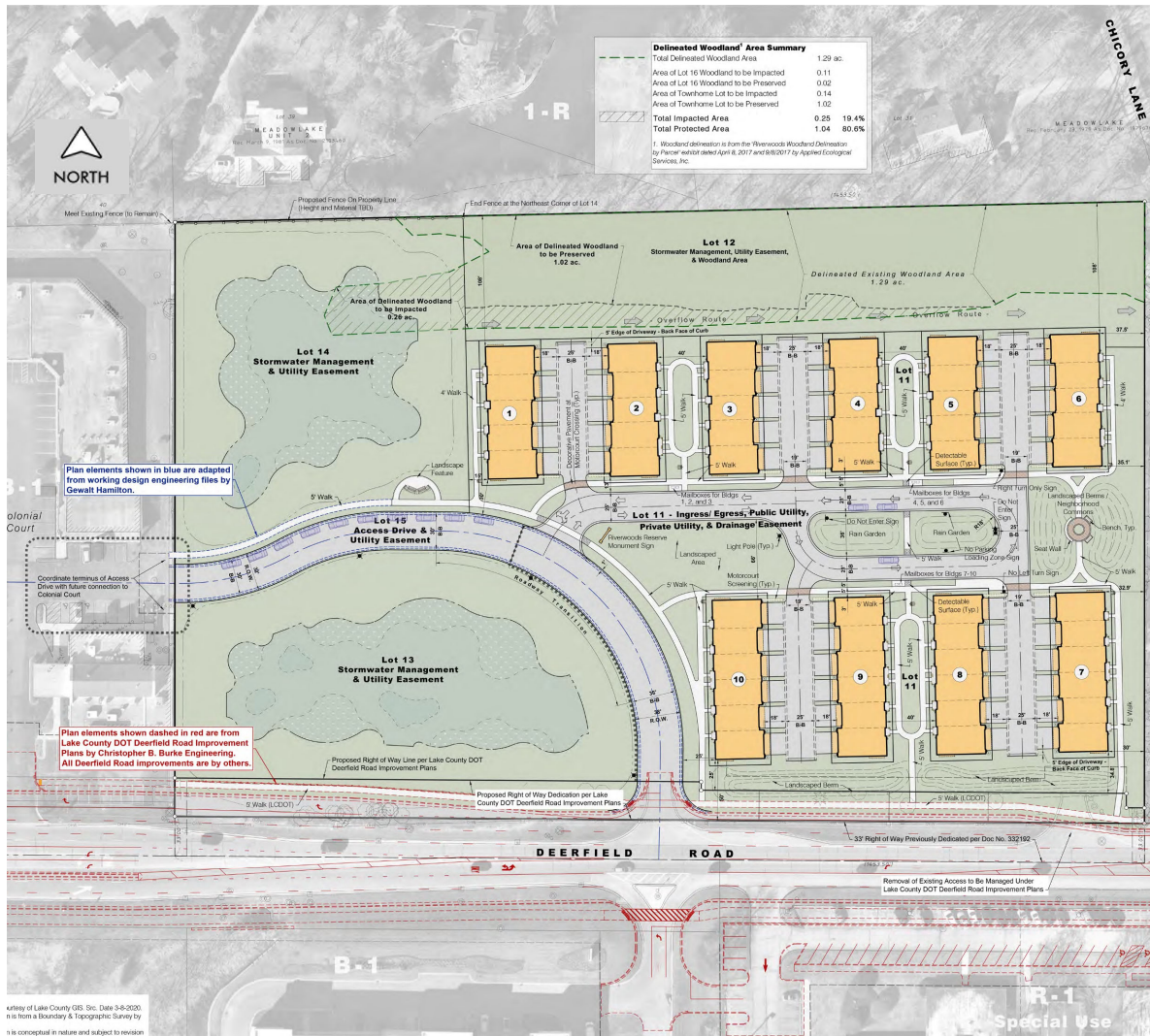
Loop Road	25'
Motor Courts	25'
Access Drive	36' and 30'

Building Height

35'

Yard Summary

Front	25'
Side	30'
Side Adjacent to Street (at Proposed Access Drive)	25'
Rear	108'



Site Data

Gross Property Area	9.38 ac.
Rear Load Townhomes	54 Units
Net Density	5.8 DU/ Ac.

Building Separation

Front - Front	40'
Back - Back	61'

Roadway Width (Back/ Back Curb)

Loop Road	25'
Motor Courts	25'
Access Drive	36' and 30'

Building Height

Yard Summary

Front	25'
Side	30'
Side Adjacent to Street (at Proposed Access Drive)	25'
Rear	108'

