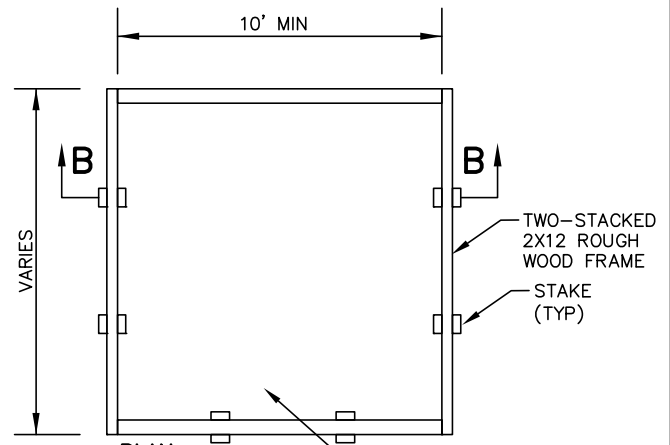
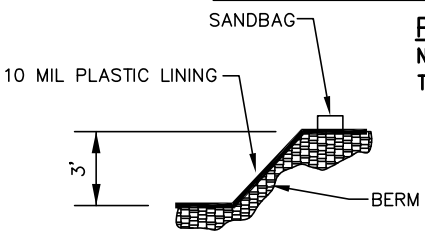


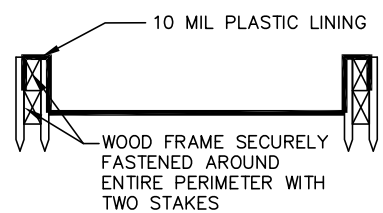
PLAN
NOT TO SCALE
TYPE "BELOW GRADE"



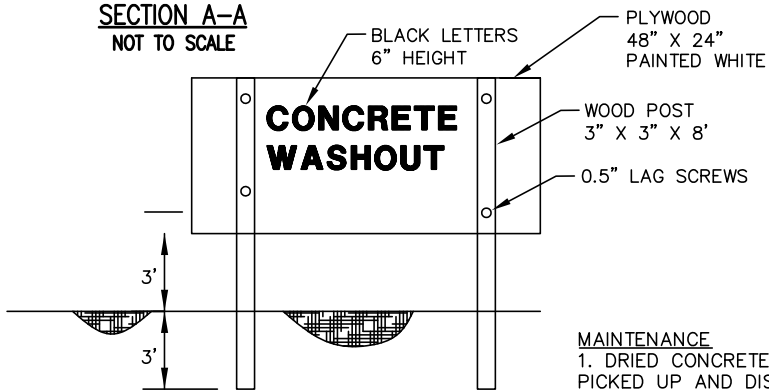
PLAN
NOT TO SCALE
TYPE "BELOW GRADE"



SECTION A-A
NOT TO SCALE



SECTION B-B
NOT TO SCALE



CONCRETE WASHOUT SIGN DETAIL
(OR EQUIVALENT)

MAINTENANCE

1. DRIED CONCRETE WASTE SHALL BE PICKED UP AND DISPOSED OF PROPERLY WHEN 75% OF CAPACITY IS REACHED.

2. HARDENED CONCRETE CAN BE PROPERLY RECYCLED AND REUSED ONSITE OR HAULED OFF-SITE TO AN APPROPRIATE FACILITY.

- NOTES**
1. ACTUAL LAYOUT DETERMINED IN FIELD.
 2. THE CONCRETE WASHOUT SIGN SHALL BE INSTALLED WITHIN 30 FT. OF THE TEMPORARY CONCRETE WASHOUT FACILITY.
 3. CONCRETE WASHOUT SHOULD NOT BE ALLOWED IN STREET OR TO REACH A STORM WATER DRAINAGE SYSTEM OR WATERCOURSE.
 4. CONCRETE WASHOUT AREA TO BE LOCATED AT LEAST 10' BEHIND CURB IF ADJACENT TO A PAVED ROAD.

CONCRETE WASHOUT