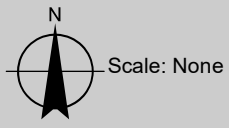


Sources: Source: Esri, HERE, DeLorme, USGS, Intermap, INCREMENT P, NRCan, Esri Japan, METI, Esri China (Hong Kong), Swisstopo, Esri Korea, Esri (The Land), Imagery, NGCC, © OpenStreetMap contributors, and the GIS User Community

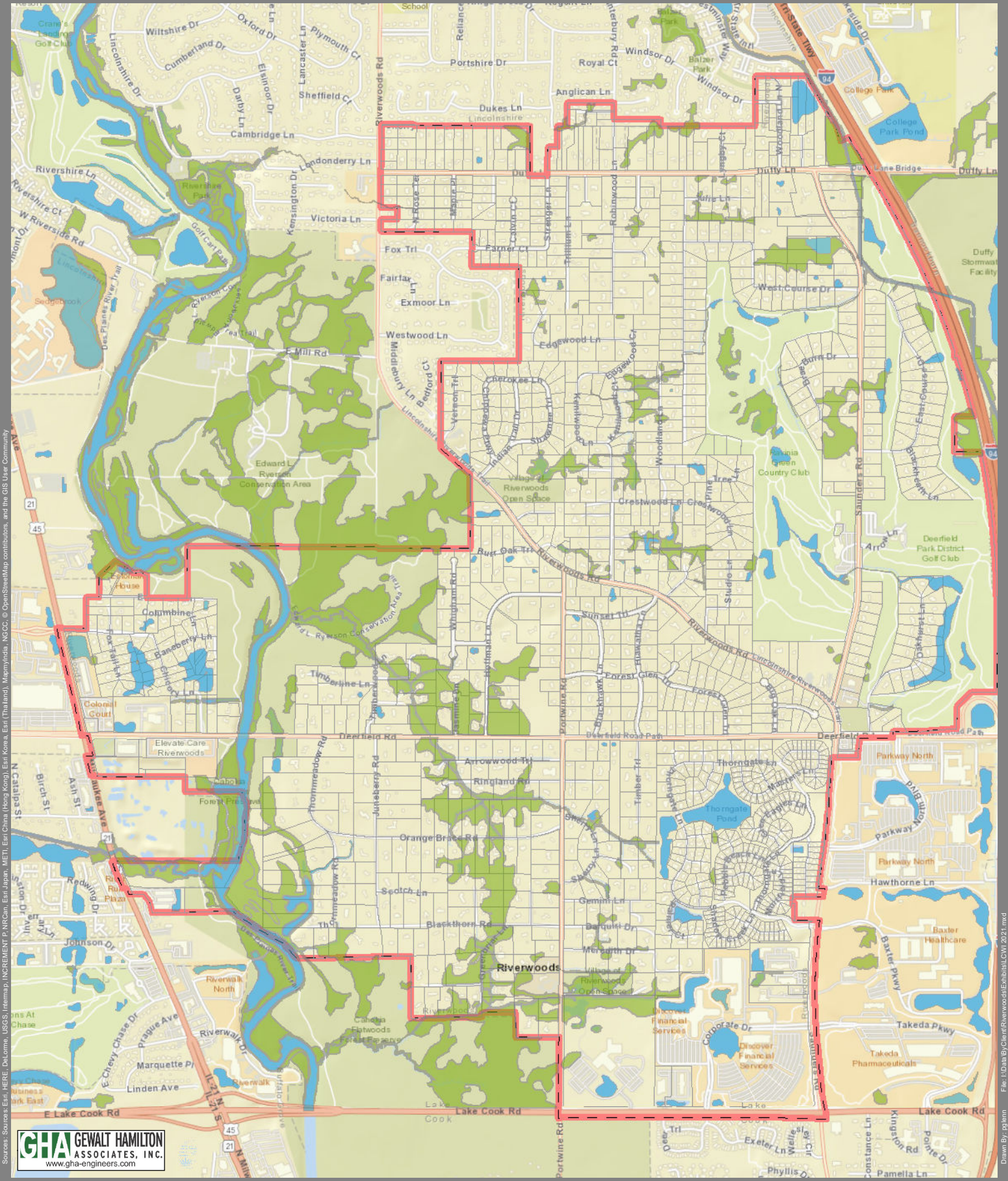
File: I:\Data\By Client\Riverwoods\GIS\EMMA_Dr\RAI_2021.mxd
Drawn By: jgim



- Legend**
- Floodway Areas in Zone AE
 - AE
 - X (Shaded)
 - X (Unshaded)

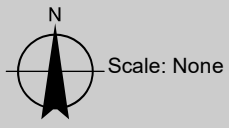
FEMA Special Flood Hazard Areas

Village of Riverwoods



Sources: Esri, HERE, DeLorme, USGS, Intermap, INCREMENT P, NRCan, Esri Japan, METI, Esri China (Hong Kong), Swisstopo, Esri Korea, Esri (Thailand), Imagery, NGCC, © OpenStreetMap contributors, and the GIS User Community

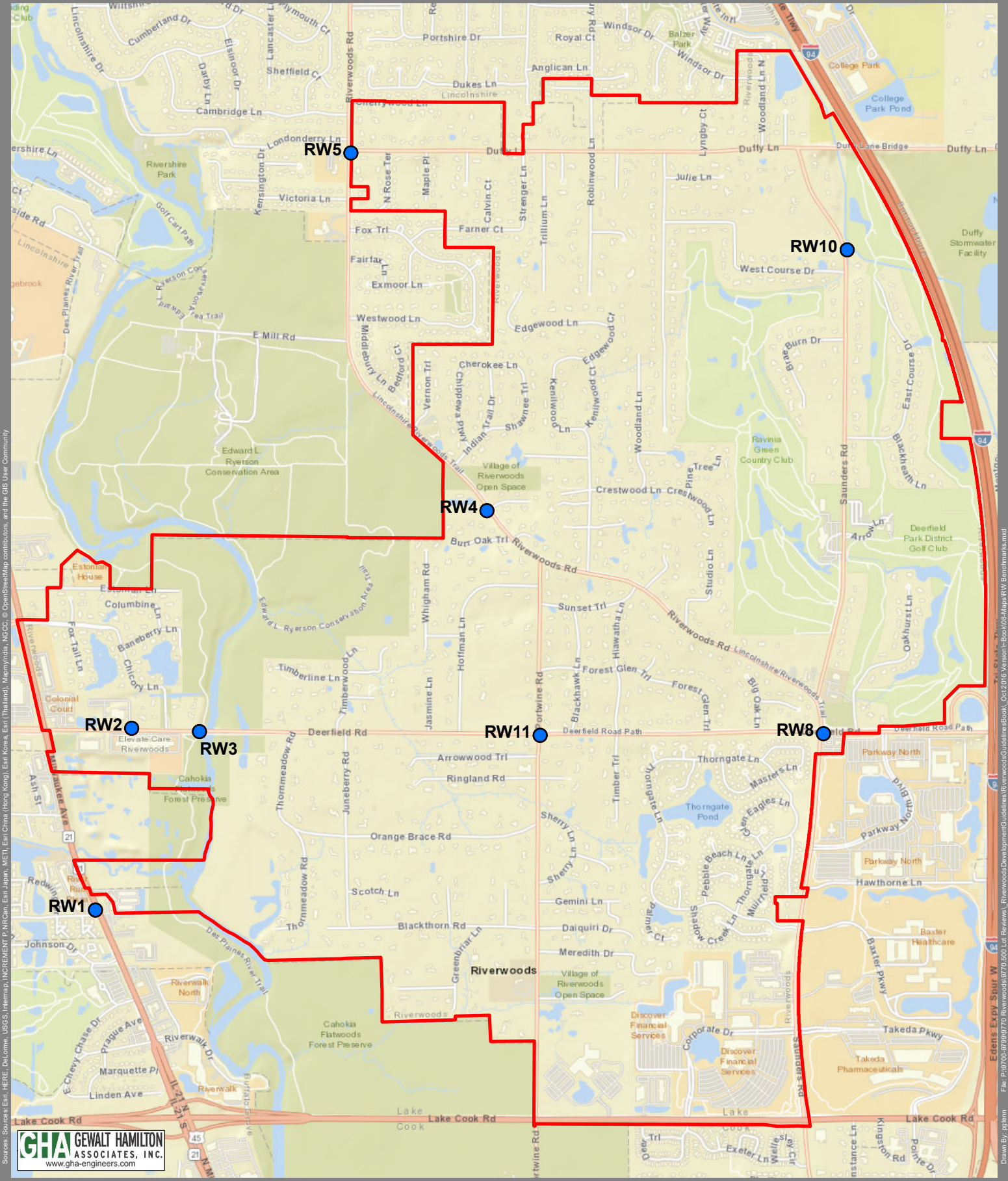
Drawn By: jgmm File: I:\Data\By Client\Riverwoods\GIS\Wetland\CW1_2021.mxd



- Legend**
- Waterbody
 - Possible Wetland

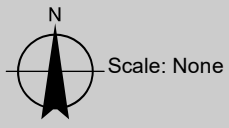
Lake County Wetland Inventory

Village of Riverwoods



Sources: Esri, HERE, DeLorme, USGS, Intermap, INCREMENT P, NRCan, Esri Japan, METI, Esri China (Hong Kong), Swisstopo, Esri Korea, Esri (Thailand), Imagery, NGCC, © OpenStreetMap contributors, and the GIS User Community

Edwards, Esri, Sprint, W...
 File: P:\9708-9799\970 Riverwoods\DevelopmentGuidelines\RiverwoodsGuidelineBook_C012016_Venison-Book\08-Maps\RW_Benchmarks.mxd
 Drawn By: jgamm



Legend

- Benchmark Locations

Benchmark Locations
 Village of Riverwoods, Illinois